

ALMAR BOOK

25



POWER TO WATER

Almar dà più potere all'acqua

perché ne esalta l'**efficacia** e i **benefici**

ALMAR GIVES MORE POWER TO WATER enhancing its efficacy and benefits.

più potere all'acqua

grazie allo studio di **tecnologie** e **soluzioni uniche**

MORE POWER TO WATER thanks to research of unique technologies and solutions.

più potere all'acqua

per renderla un **elemento rigenerante** per il nostro corpo

MORE POWER TO WATER to make it a revitalizing element for your body.

più potere all'acqua

per regalare **esperienze sensoriali** e **immersive** per il corpo e la mente

MORE POWER TO WATER to create sensory and immersive experiences for body and mind.

più potere

è pensare e realizzare prodotti che **riducono i consumi**,

Sia di **acqua** sia di **energia** elettrica

create and realise products to reduce both water and energy consumptions.

più potere all'acqua

per dare più valore alla tua casa e alla tua vita quotidiana grazie a

soluzioni sostenibili

adding value to your home and everyday life through sustainable solutions.

più potere

perché il **design minimalista** dei prodotti è in perfetto equilibrio

con lo stile contemporaneo



because the minimal design of the products is in perfect harmony with contemporary style.

LA NOSTRA AZIENDA

ABOUT ALMAR

Gli stabilimenti ALMAR si estendono su una superficie totale di **10.000 mq** divisa in 2 stabilimenti produttivi:
1_ stabilimento di Gavirate in cui hanno sede gli uffici commerciali, tecnici ed amministrativi e la produzione per i reparti acciaio, PVD e assemblaggio oltre al **nuovo showroom espositivo**, inaugurato a gennaio 2020.
2_ stabilimento di Cocquio Trevisago in cui trovano collocazione i reparti di stampaggio materie plastiche e il reparto torneria.

ALMAR's factory covers a total surface of 10,000 square meters divided into two production plants.
1_The production plant in Gavirate hosts the sales, technical and administrative offices. There's also the manufacturing department involved in steelmaking, PVD production and the assembly department. This plant hosts the new showroom opened in January 2020.
2_The production plant in Cocquio Trevisago hosts the moulding plastics department and the turning machines department.

 100% MADE IN ITALY	produzione interamente italiana <i>entirely italian production</i>	 alti standard qualitativi <i>high quality standard</i>	 ricerca e sostenibilità <i>research and sustainability</i>	 ampia gamma di materiali e finiture <i>wide range of materials and finishes</i>
---	--	--	--	---



.1

	55 anni nel settore <i>years in the industry</i>
	2 stabilimenti produttivi <i>production plants</i>
	120+ persone in staff <i>people in staff</i>
	10.000 mq di reparti produttivi <i>sqm of production</i>
	50+ paesi export anno 2024 <i>export countries year 2024</i>



.2



.3



.4

.5



- .1 Stabilimento di Gavirate
- .2 Il mulino* per la macina del grano
- .3 Reparto produzione stampaggio
- .4 Reparto PVD
- .5 Stabilimento di Cocquio Trevisago

- .1 Gavirate production plant
- .2 The water mill* of Barasso
- .3 Molding department
- .4 PVD Dept.
- .5 Cocquio Trevisago production plant

* L'antico mulino è stato restaurato e si trova ne comune di Barasso, a testimonianza della storia di ALMAR e del suo legame con le tradizioni.

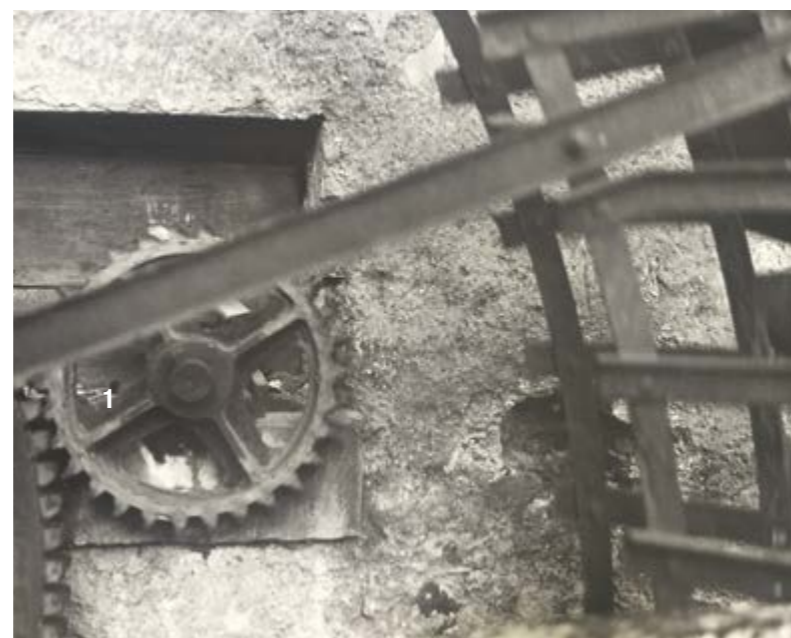
* The ancient mill has been restored and is located in the municipality of Barasso, to show Almar's story and its link with traditions

LA NOSTRA STORIA

OUR HISTORY



1900



DAL 1900 | UN'AUTENTICA PASSIONE PER L'ACQUA

La storia di un'azienda è spesso intrecciata con la **storia del luogo in cui tutto è nato**. Per ALMAR, quel luogo è un **mulino ad acqua**.

Era il 1900 quando il capostipite della **famiglia Civelli** comprò un mulino ad acqua per la macina del grano. Un antico mestiere di famiglia, profondamente legato a una **passione per l'acqua** che verrà tramandata di generazione in generazione.

La stessa passione con cui, oltre un secolo dopo, Marco e Aldo Civelli accompagneranno ALMAR sul mercato internazionale, emozionando i propri clienti attraverso una **nuova esperienza con l'acqua** che rivoluzionerà il modo di abitare lo spazio bagno.



SINCE 1900 | A TRUE PASSION FOR WATER

The history of a company is often linked with the story of the **place where everything started**. As far as ALMAR is concerned, this place is a **water mill**.

In 1900, the forefather of the **family Civelli** bought a water mill to grid wheat. An old family craft, deeply connected with the **passion for water**, handed down to the following generations.

The same passion with which, after more than one century, Marco and Aldo Civelli will accompany ALMAR on the international market, providing their customers with a **new experience with water**, that will revolutionize the way of living the bathroom.

LA NOSTRA STORIA

OUR HISTORY

Gianluigi Civelli fonda la Civelli Gianluigi & C. snc, un'azienda artigiana specializzata nella costruzione di stampi, che inizierà presto ad operare nel mercato delle rubinetterie.

Gianluigi Civelli establishes Civelli Gianluigi & C. snc, a craft business specialized in the production of moulds and in the moulding of thermoplastic materials. The company will soon start operating in the market of taps and fittings.



1969



1996

NASCE ALMAR.

I figli Marco e Aldo iniziano la loro attività imprenditoriale: la nuova azienda dedica la sua attività al **settore bagno**, attraverso la produzione di accessori per rubinetterie per conto terzi.

*Marco and Aldo, sons of Gianluigi Civelli, start their own business. Aim of the new company is the **bathroom sector**, producing taps and fittings accessories for third parties.*

1999

Nascono i primi prodotti e **sistemi doccia ALMAR**: ogni pezzo è ideato, progettato e prodotto internamente.

ALMAR's first products and shower systems are born: every piece is designed, planned and produced internally.

2006

Inizia la partecipazione di ALMAR alle più importanti **fiere** internazionali di settore.

*ALMAR starts attending the most important **international exhibitions** of the sector.*



2012

L'inedito concept di Sistemi Doccia by ALMAR segna la nuova direzione dell'azienda: regalare ai propri clienti esperienze emozionali attraverso le proprie creazioni.

*The new concept of **Shower Systems by ALMAR** marks the new direction of the company: providing their customers with emotional experiences through their creations.*



2015

ALMAR inaugura la sua nuova sede a Cocquio Trevisago.

*ALMAR opens the **new site** in Cocquio Trevisago.*

2017

L'azienda ottiene la certificazione **OHSAS 18001** e il passaggio alla nuova norma **ISO 9001**.

*The company obtains the **OHSAS 18001 certification** and the passage to the new **ISO 9001** standard.*



2019

La produzione si amplia con un nuovo reparto di torneria e fresatura in acciaio e ottone.

La forte espansione dell'azienda porta inoltre all'**ampliamento del reparto PVD** e all'**introduzione di nuovi macchinari e tecnologie**, capaci di far fronte alle più esigenti richieste di produzione.

*The production expands with a new steel and brass **turning and milling department**.*

*The big expansion of the company leads furthermore to the **widening of the PVD department** and the **introduction of new machines and technologies**, able to meet the most demanding production requests.*



2023

Nasce la collezione Velvet, l'espressione più avanzata e compiuta della filosofia dell'acqua Almar. L'obiettivo è fornire prodotti che uniscano un grande risparmio idrico a un'emozione sensoriale unica nel suo genere. **Una collezione in costante espansione** che si arricchisce ogni anno di nuovi prodotti.

*The **Velvet collection** comes to life. It is the most advanced and successful product of the Almar water concept and it aims to provide products that combine water savings with unique sensorial emotions. **Now a collection that constantly expands** with new products every year.*



2009

ALMAR ottiene la certificazione ISO 9001.

*The company obtains the **ISO 9001 certification**.*

2010

Nasce il sistema EcoAir, progettato per un utilizzo ecologico dell'acqua. Oggi sostituito dal più innovativo getto Velvet Rain

*The **EcoAir system**, designed for an ecological employment of water, is born. Today replaced by the more innovative Velvet Rain jet*



2018

ALMAR è **tra le prime aziende in Italia** a introdurre all'interno dei suoi processi produttivi il rivestimento **PVD** (Physical Vapor Deposition).

*ALMAR is one of the first companies in Italy to introduce the PVD coating in its production processes. (Physical Vapor Deposition) **coating**.*



2020

ALMAR inaugura il suo nuovo showroom.

Uno spazio accogliente e ricercato in cui visionare le collezioni nel luogo stesso in cui hanno origine.

*ALMAR opens **its new showroom**. A refined space where the collections can be seen in the place where they are created.*



2024

L'azienda amplia la propria offerta mettendo a catalogo anche la rubinetteria completa per lavabo: **nasce il bagno Almar.**

*The company extends the offer by adding a complete range of taps and faucets for washbasins to its catalogue - **the range Almar Bathroom** comes to life.*

SOSTENIBILITA' DI IMPRESA

CORPORATE SUSTAINABILITY



È con grande piacere che vi presento il nostro primo Bilancio di Sostenibilità, risultato di un percorso partito da lontano e che ha accompagnato gli ultimi anni della vita della nostra azienda.

I'm very pleased to introduce you our first Sustainability Report, the result of a journey started from afar and that has gone through the last years of our Company.



Abbiamo investito in:

We have invested in:

Nuove tecnologie a basso impatto ambientale, come gli impianti per la realizzazione del **rivestimento PVD** (Physical Vapor Deposition) che rappresenta un'alternativa ai procedimenti di rivestimento tradizionali. L'intero processo è sicuro ed ecosostenibile, non produce scorie di lavorazione e non utilizza materiali tossici.



New low-impact technologies, such as **PVD** (Physical Vapor Deposition) coating systems, which represent an alternative to traditional coating processes. The entire process is safe and environmentally sustainable. It does not produce processing waste and does not use toxic materials.



Sistemi all'avanguardia nelle emissioni, come le Innovative **lavatrici sottovuoto** che, dotate di tecnologia green, garantiscono il recupero del 99% dei materiali di scarto.

Cutting-edge emission systems, such as the innovative **vacuum washing machine**, equipped with green technology and guarantee the recovery of 99% of waste materials.

Pannelli fotovoltaici per l'alimentazione degli stabilimenti.



Photovoltaic panels to power our facilities.

sicurezza e benessere dei dipendenti

- Formazione
- Attività di rilevanza sociale
- Salute e sicurezza sul luogo di lavoro
- Sicurezza e qualità del prodotto

Safety and wellbeing of our employees

- Training
- Social impact activities
- Workplace health and safety
- Product safety and quality

Vogliamo che la nostra idea di futuro sostenibile sia intrisa di obiettivi ambiziosi, sia implementata nel quotidiano da attività concrete, sia costruita insieme a VOI.

We want our vision of a sustainable future to be full of ambitious objectives, implemented through concrete daily actions, and built together with YOU

Marco Civelli

Presidente del CDA

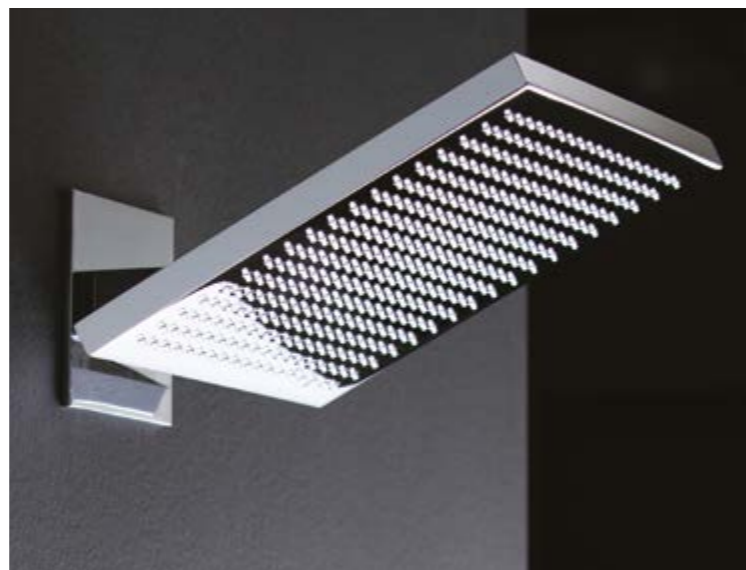
Chairman



Water

Technology

Design



Acqua, Tecnologia e Design

Water, Technology and Design

Da sempre, il lavoro di Almar è guidato da 3 elementi che si fondono per dare vita a creazioni che sorprendono. In ogni nostro prodotto il **perfetto equilibrio tra Acqua, Tecnologia e Design** garantisce risultati ottimali ed elevate prestazioni.

Three elements have always featured in Almar's craftsmanship - the perfect balance of Water, Technology, and Design, which guarantees excellent results and high performance in each of our products.

Acqua | Water

L'espressione delle nostre idee

L'acqua è il fulcro del nostro lavoro. Almar lavora da sempre con questo elemento primario per garantire benessere alle persone, evitare gli sprechi e mirare al risparmio di una fondamentale risorsa. Per questo, realizziamo tutti i nostri prodotti nel massimo rispetto del Pianeta e ci impegniamo nella ricerca di sempre nuove funzioni per ridurre il consumo idrico, unendo ecologia e comfort.

Showing our ideas

Water is at the heart of our commitment. Almar has always been working with this primary element to ensure well-being while avoid waste of this fundamental resource. To that end, we manufacture all our products with the utmost respect for the planet, continually investing in new designs to reduce water consumption, combining environmental sustainability and comfort.

Tecnologia | Technology

La funzionalità delle nostre soluzioni

Rimanere sempre al passo con le innovazioni. Meglio ancora, cercare di anticiparle. Questa è la caratteristica che contraddistingue i nostri prodotti. Il miglioramento della vita delle persone nelle loro azioni quotidiane è l'obiettivo della nostra ricerca tecnologica.

The feature of our engineering

Is always to keep up with innovation, or better still, to anticipate it. This is the hallmark of our products. Improving lives of people in their daily life activities is the goal of our technological research.

Design

L'unicità dei nostri prodotti

Equilibrio, funzionalità e proporzioni estetiche sono gli elementi che si fondono al meglio nel design dei prodotti Almar. Autentici oggetti d'arredo in grado di inserirsi in ogni ambiente bagno, donando carattere e personalità grazie all'estrema pulizia delle linee.

The uniqueness of our products

Balance, functions and aesthetic proportions are the features combined in the design of all the Almar products. They are truly authentic furnishing accessories that fit into any bathroom and enhance elegance and style through their distinctive clean designs.

Acqua | Water

le nostre soluzioni per il **benessere**

our solutions for **wellbeing**

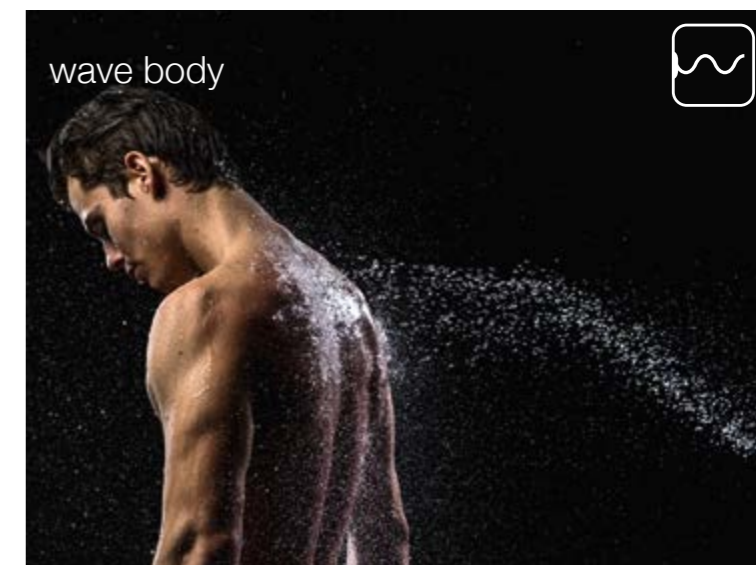
GETTI LATERALI

BODYJETS



La potenza del getto rotativo spin nell'installazione a parete, dona un **massaggio mirato su gambe e schiena** che riattiva la circolazione sanguigna e tonifica i tessuti.

*The power of the spin jet, joined with the installation on the wall, for **localized massage on legs and back**, able to reactivate the blood circulation and tone up the tissues.*



Un'onda basculante che accarezza con vigore, donando un **rigenerante massaggio total body**.

*A tilting wave caressing with strength, for a **regenerating total body massage**.*



Un ampio getto a pioggia, morbido e avvolgente, con un **prezioso effetto delicato**.

*A wide rain jet, for a **relaxing and deeply enveloping effect**.*

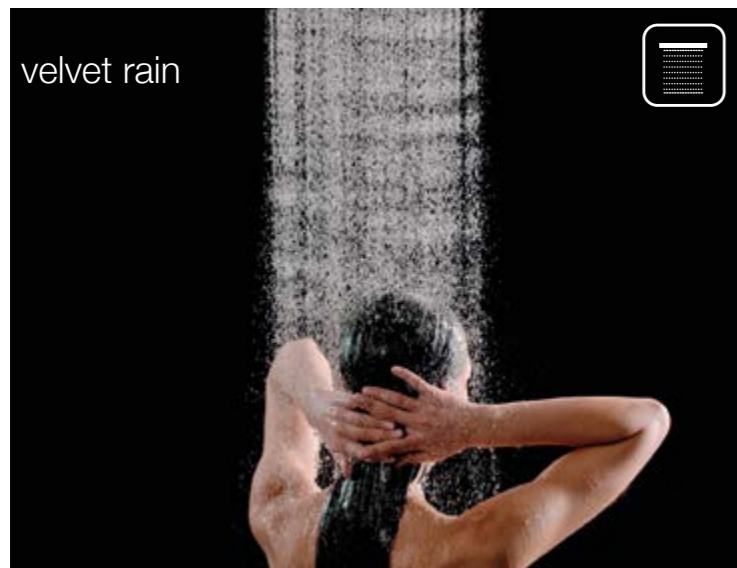


Un rigenerante getto nebulizzato che sa accarezzare con un **tocco delicato silenzioso e leggero**.

*A refreshing nebulized jet wrapping up in a **silent, light and enveloping touch**.*

SOFFIONI

HEAD SHOWERS



velvet rain



Una pioggia sottile e vellutata, per un effetto uniforme, avvolgente e rilassante. Garantisce un risciacquo completo e uniforme in una coccola morbida e silenziosa.

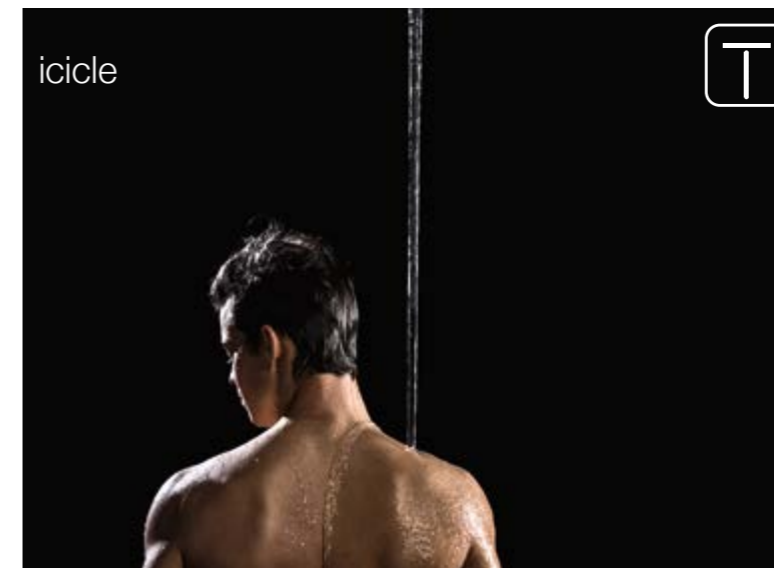
A thin and velvety rain, for a steady, enveloping, and relaxing effect ensuring a complete and even rinsing from soap and shampoo in an enveloping and silent cuddle.



intense rain

Corposi e intensi fili d'acqua avvolgono il corpo con un getto intenso e dal forte potere rigenerante.

Thick water threads for a strong and deeply regenerating jet.

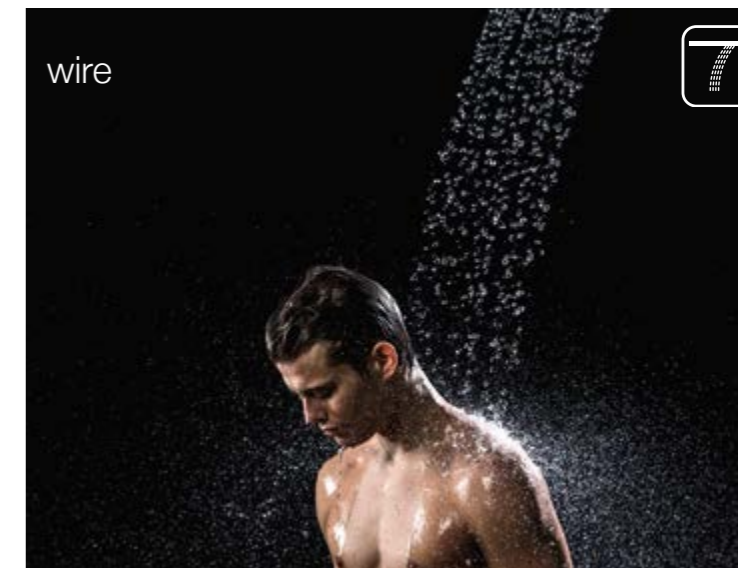


icicle



Un elegante cilindro d'acqua che raggiunge il corpo con un getto pieno e coinvolgente, per poi scorrere sulla pelle in modo delicato e uniforme. Per chi in una doccia cerca carattere e unicità.

An elegant water cylinder hitting the body with a full and involving jet, that then distributes softly and evenly on the skin. For those who look for character and uniqueness in a shower.

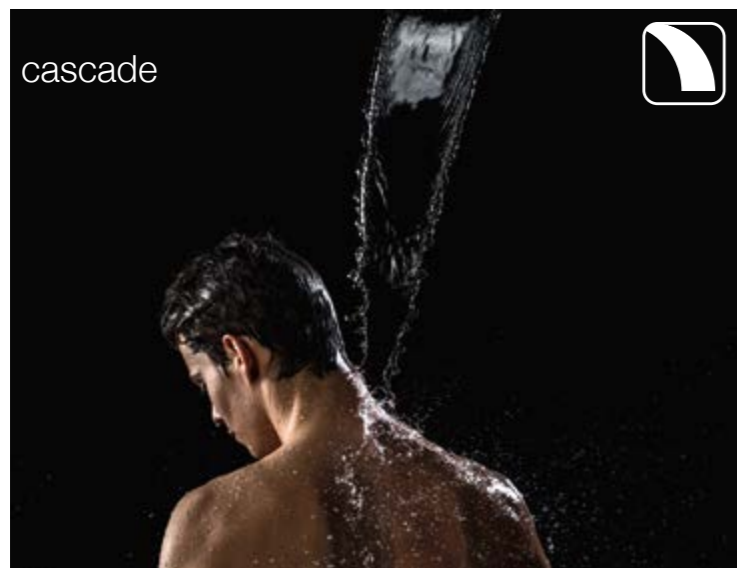


wire



Copiosi e intesi cilindri d'acqua creano un'ampia cascata a pettine, distribuendosi con uniformità sul corpo, senza mai perdere la loro originaria consistenza.

Rich water cylinders create a wide diagonal waterfall and distribute uniformly on the body, without losing their consistency during the fall.



cascade



Un'ampia, morbida cascata d'acqua si riversa sul corpo in un getto piacevole e corposo, per un profondo effetto esteso e distensivo.

A wide water blade flows onto the body in a pleasant and dense jet, for a deep relaxing effect from one shoulder to the other.



spin



La perfetta armonia di un moto a spirale ad intensa azione massaggiante e tonificante. Ideale per sciogliere tensioni e contratture dopo un allenamento sportivo o una giornata di lavoro.

The perfect harmony of a double spiral jet with a deep massaging and tonic action. The ideal jet to loosen tensions and contractures after a sports training or a long working day.



mist



Una rinfrescante pioggia nebulizzata che avvolge in un tocco silenzioso. Ideale, dopo il getto pioggia, per concludere un quotidiano rituale di benessere.

A refreshing nebulized rain wrapping up in a silent, light and enveloping touch. Ideal, after rain jet, to end the daily shower.



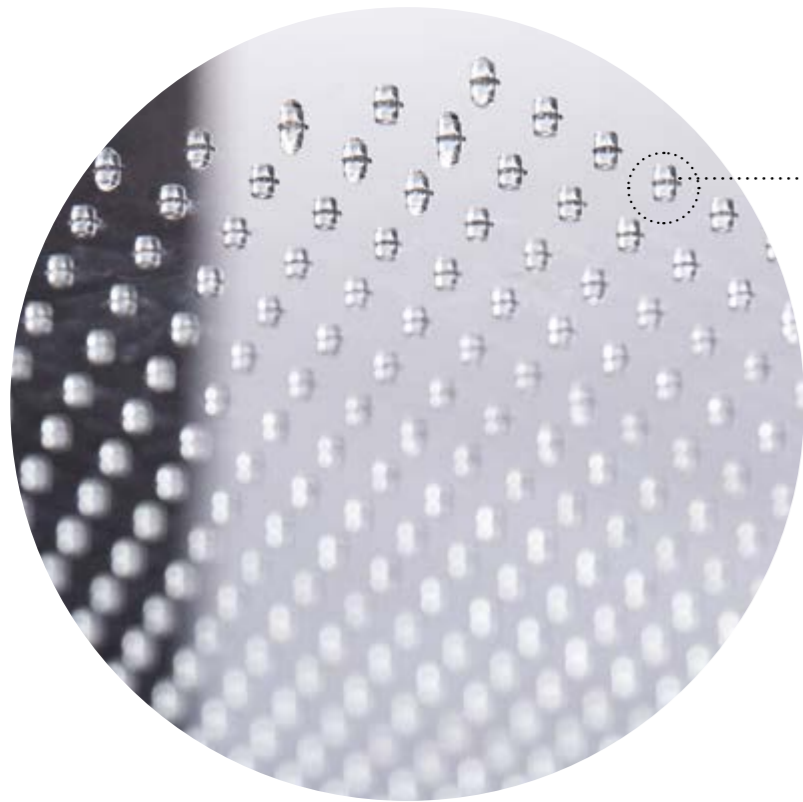
rain



Sa rendere speciale la semplice doccia quotidiana. Un getto uniforme, rapido e versatile, adatto ad ogni momento della giornata.

A special, simple daily shower. An even, quick and versatile jet, suitable for every moment of the day.

VELVET: FEEL WATER DIFFERENTLY



Velvet Rain

Almar ha cambiato il modo di fare la doccia. Il nuovo getto Velvet Rain regala un'esperienza sensoriale morbida, avvolgente e silenziosa che sa unire benessere, stile ed ecologia.

Una fitta pioggia sottilissima, vellutata, che avvolge e rilassa in una coccola silenziosa, garantendo un risciacquo completo e uniforme.

Almar has changed the way people shower. The new Velvet Rain jet provides a soft, enveloping, and silent sensory experience that combines well-being and style while reducing water waste.

It releases fine and velvety rain-type droplets that wrap and relax the body, like a quiet hug while providing a thorough wash.



L'acqua, la risorsa più preziosa

Water, the most precious resource

Nuove tecnologie per proteggere il Pianeta

Ci impegnamo per garantire il benessere delle persone, ma anche quello dell'ambiente. Da molti anni, gran parte del nostro impegno è rivolto alla ricerca di nuove tecnologie per la salvaguardia dell'acqua e al costante miglioramento di quelle esistenti.

New technologies protecting the Planet

Our commitment is to provide well-being to our customers while guaranteeing environmental sustainability. We have invested many years in the research of new water-saving technology and constant improvement of the existing ones.

Tecnologia | Technology

i nostri sistemi per il **controllo dell'acqua**

our **water control** systems

Abbiamo progettato e costruito nuovi sistemi per l'acqua che creano inedite connessioni tra i nostri prodotti: soffioni, docce e i miscelatori usati per controllarli.

We have designed and manufactured innovative water systems that seamlessly integrate our products - head showers, handheld showers, and mixer taps - creating a new level of connectivity and control.

MODULAR

per sistemi **da 1 a 5 funzioni**
from 1 to 5 ways systems

sistemi doccia e vasca
shower and bathtub systems

varietà di **estetiche**
several different looks

varietà di **finiture**
several different finishing



CORE

per sistemi **da 1 a 3 funzioni**
from 1 to 3 ways shower systems

box incasso universale
universal built-in box

varietà di **estetiche**
several different looks

varietà di **finiture**
several different finishing



HIGH FLOW

termostatico ad **alta portata**
high flow thermostat

per sistemi **da 1 a 6 funzioni**
from 1 to 6 ways shower systems

utilizzo contemporaneo di più uscite
simultaneous use of more ways

varietà di **estetiche**
several different looks

varietà di **finiture**
several different finishing



COLLEZIONE MODULAR

MODULAR COLLECTION

Un nuovo concetto di miscelazione

Modular è il nuovo sistema di moduli a incasso brevettato da Almar. Consiste in una **serie di elementi configurabili in diverse soluzioni**, per soddisfare il massimo delle aspettative funzionali ed estetiche

Un nuovo concetto di miscelazione che fa dell'**equilibrio estetico e tecnologico** il suo punto di forza. Grazie a un moderno studio della cartuccia termostatica, il sistema Modular permette di ridurre lo spazio di installazione e di ottenere un sistema doccia multifunzione, con **soluzioni estetiche proporzionate e bilanciate**.

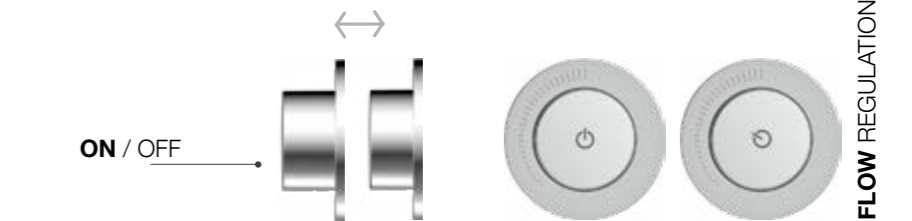
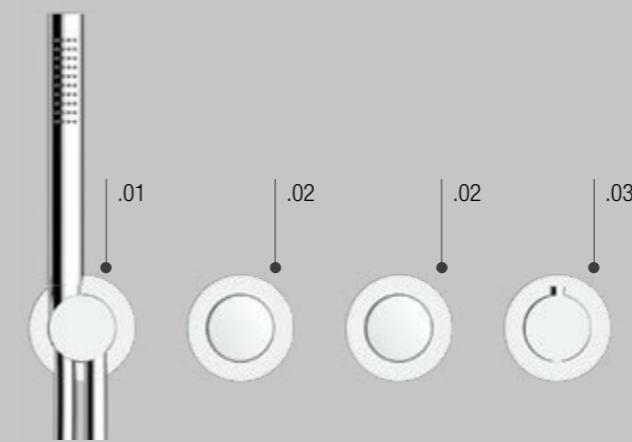
A new mixing concept

Modular is the new system of built-in modules designed by ALMAR: a series of **modules configurable in different solutions**, to meet the maximum expectations in terms of functionality and aesthetics.

A new concept of mixing, that makes of aesthetic and technological balance its strong points: thanks to the modern study of the cartridge, the **Modular system** allows to reduce the installation space and to obtain a multi-function shower system with rosettes of the same size.



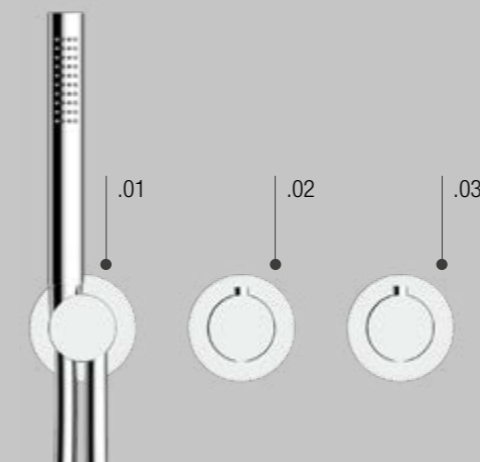
versione termostatica push push thermostat version



- .01 presa acqua con doccia
- .02 apertura/chiusura + regolazione portata
- .03 regolazione temperatura

- .01 water outlet with hand shower
- .02 open/close + flow regulation
- .03 temperature regulation

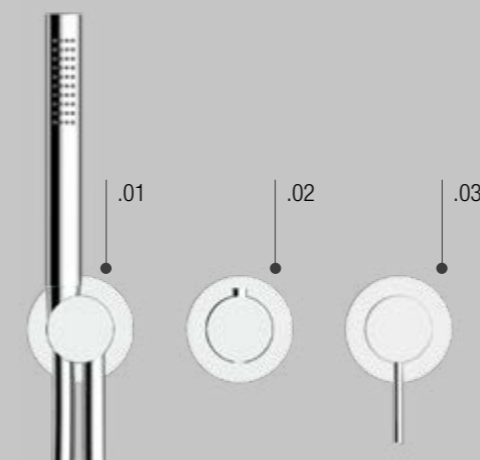
versione termostatica thermostat version



- .01 presa acqua con doccia
- .02 apertura/chiusura + deviatore
- .03 regolazione temperatura

- .01 water outlet with hand shower
- .02 open/close + diverter
- .03 temperature regulation

versione meccanica single lever mixer version



- .01 presa acqua con doccia
- .02 deviatore
- .03 apertura/chiusura + regolazione temperatura

- .01 water outlet with hand shower
- .02 diverter
- .03 open/close + temperature regulation

COLLEZIONE CORE

CORE COLLECTION



CORE universal box è il cuore di ogni miscelatore CORE.

Un corpo a incasso universale che si declina in tre differenti interpretazioni estetiche e funzionali, per garantire il massimo della **versatilità e della personalizzazione**.

Installando CORE universal box sarà possibile cambiare moduli, placche e finiture in qualsiasi momento, senza alcun intervento di muratura

CORE universal box is the heart of each CORE mixer tap.

*A universal embedded body with three different interpretations as to look and functionality. To ensure you the maximum **versatility and personalization**.*

*Installing **CORE universal box** you can change your modules, plates and finishing at any moment, without any masonry interventions.*



PUSH

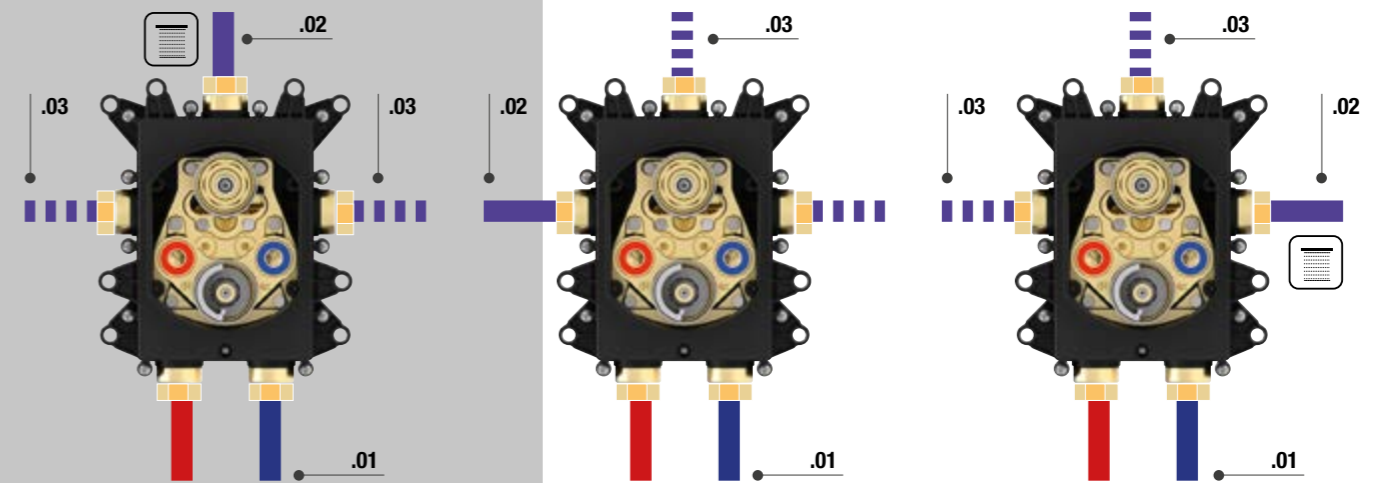


THERMOSTAT

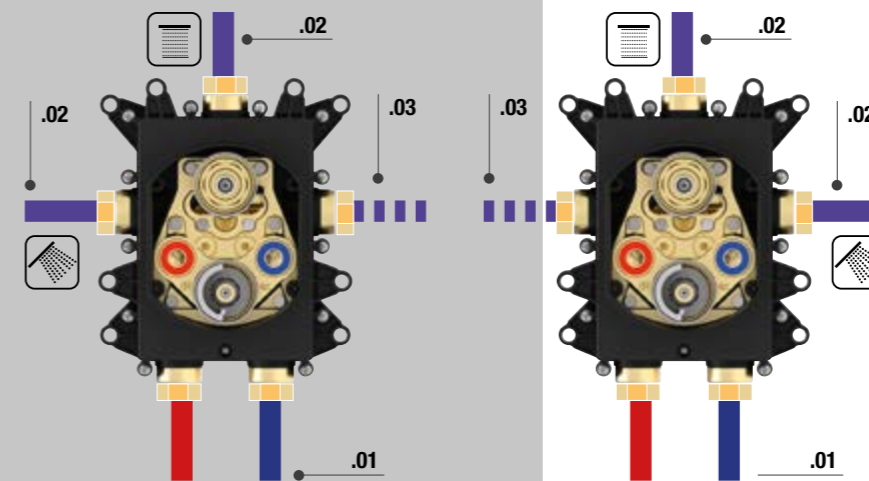


MIXER

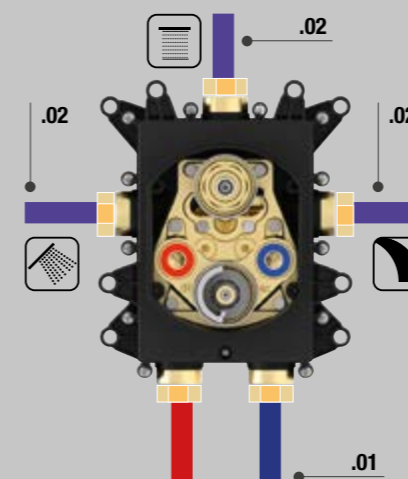
1 VIA 1-WAY



2 VIE 2-WAY



3 VIE 3-WAY

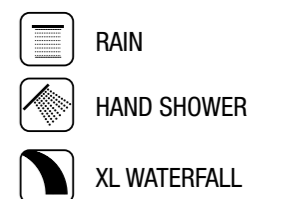


LEGENDA

.01 ingresso acque
.02 uscita aperta
.03 uscita chiusa

LEGEND

.01 water inlet
.02 open way
.03 closed way



COLLEZIONE HIGH FLOW

HIGH FLOW COLLECTION

High Flow è il nostro **innovativo miscelatore ad alta portata**. Una sofisticata soluzione che ti permette di configurare il tuo sistema doccia, personalizzando il numero di getti, l'orientamento del miscelatore e lo stile delle maniglie. Per un'esperienza doccia che trasforma il bagno in una spa.

*High Flow is the innovative **high flow mixer tap by ALMAR**. A refined solution that allows you to shape your shower system, personalizing the number of jets, the orientation of the mixer tap and the look of the handles. For an incredible shower experience that transforms your bathroom in a spa.*

INCREDIBLE SHOWER EXPERIENCE

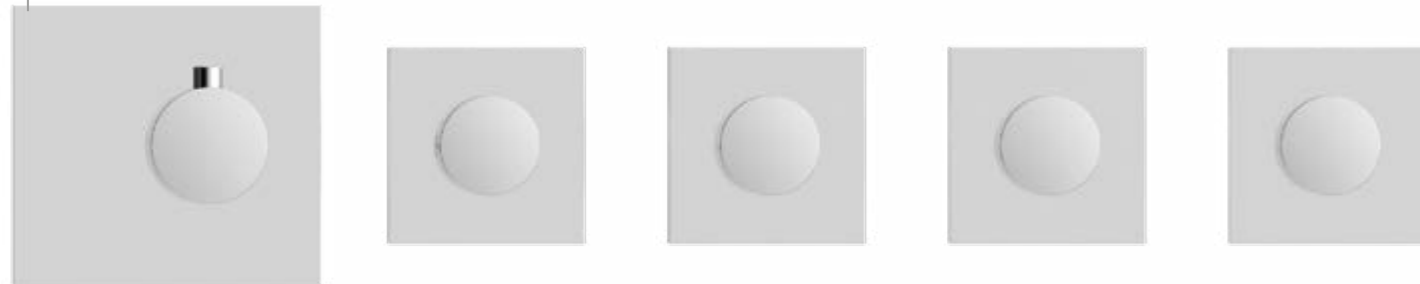
Intensa potenza di getto e **uso simultaneo di più funzionalità**

*A deep jet power and a **simultaneous employment** of several functionalities*

MEETS YOUR NEEDS

Installazione orizzontale o verticale

*Horizontal or vertical **installation***



PERSONALIZATION

Estetiche con placca unica o maniglie singole

Single plate or single handles possibilities

FROM 1 TO 6 WAYS

Crea il tuo sistema doccia ideale

Create your ideal shower system



Design

le nostre nuove **collezioni**

our new **collections**



Velvet

Un'inedita esperienza intensa e avvolgente, mai provata prima. La ricerca realizzata sui microfori ha permesso di trasformare l'acqua in una vellutata carezza. **Ogni prodotto Velvet è sinonimo di design e armonia estetica.** La silenziosa tecnologia applicata all'acqua offre un'esperienza doccia totalmente rilassante.

An entirely new, intense, and immersive experience. Advanced micro-hole engineering transforms water into a velvety caress. Each Velvet product embodies cutting-edge design and aesthetic harmony, while silent technology ensures a deeply relaxing shower experience.

Modular Push

Un nuovo sistema per il controllo dell'acqua che nasce da un attento studio della tecnologia interna. Il risultato? Una contemporanea estetica minimale e una piacevole uniformità nelle dimensioni.

A new water control system is the outcome of a thorough study of internal technology design. The result is a contemporary minimalist look and a pleasant uniformity in size.

Velvet

Da oggi la regolazione dell'acqua è gestita da un solo comando che unisce due funzioni: apertura/chiusura e regolazione del flusso. La **semplicità di utilizzo unita all'estetica hi-tech** rende CORE PUSH un prodotto iconico.

Water flow can now be regulated by a single control that combines two functions - open/close and flow regulation. Ease of use combined with hi-tech aesthetics make CORE PUSH an iconic product.

Core Push



VELVET COLLECTION

SOLUZIONI E APPLICAZIONI SOLUTIONS AND APPLICATIONS

La collezione Velvet, nata nel 2022, offre oggi una gamma completa di prodotti, tutti caratterizzati da un **design minimalista e fortemente distintivo**.

La linea comprende diverse applicazioni:

- Soffioni a incasso
- Soffioni a parete
- Colonne doccia
- Docce

The Velvet collection, created in 2022, offers a complete range of products, all characterised by a minimalist and distinctive design.

This range includes several applications:

- Built-in head showers
- Wall-mounted head showers
- Shower columns
- Showers

soffioni a **incasso**
built-in
head showers



soffioni a **parete**
wall mounted
head showers

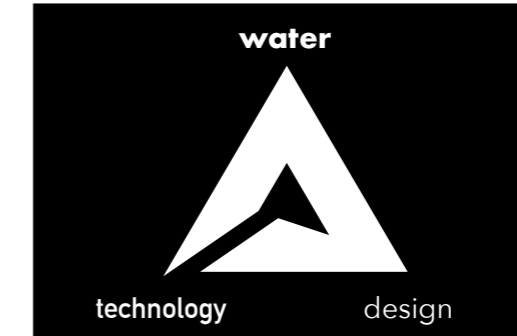
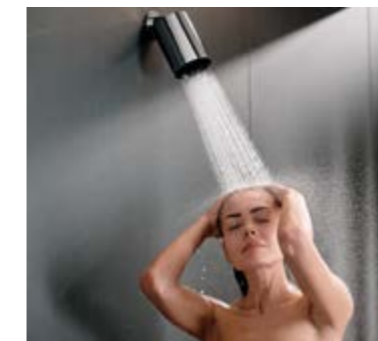
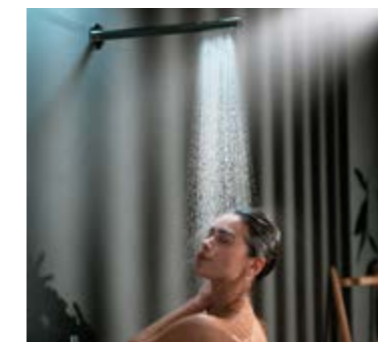
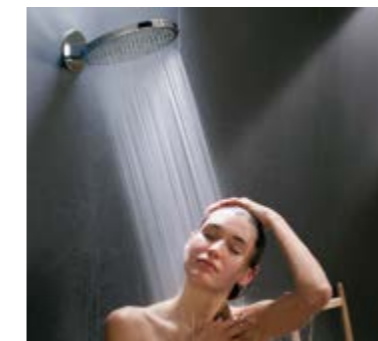


colonne doccia
shower **columns**



In ciascuna delle tipologie di applicazione dei prodotti della gamma Velvet, il Design è un elemento che guida lo sviluppo del prodotto. **Insieme ad Acqua e Tecnologia, il Design è un principio imprescindibile** in ciascuno dei prodotti Almar.

*Design is a leading element in the development of each product of the Velvet collection.
Together with water and technology, design is a crucial principle in each Almar product.*



soffione **Velvet Light**
Light Velvet head shower

WATER TECHNOLOGY DESIGN

doccia **Velvet**
Velvet hand shower

miscelatore **Modular Push**
Modular Push mixer

***NOTA BENE:** il miscelatore Modular E180433 è venduto con in dotazione la doccia Easybrass E082091.

PLEASE NOTE: Modular Mixer E180433 is sold equipped with the hand shower Easybrass E082091.

Design minimalist per un'esperienza avvolgente

Un getto d'acqua sorprendente: l'ampia apertura del raggio di erogazione assicura un'esperienza doccia intensa, avvolgente, unica.
Grazie al suo rosone dal diametro di 70 mm, il soffione è perfetto in un ambiente doccia dotato di Miscelatore Modular.

Minimalist design, envolving experience

*Minimalist design for an enveloping experience
A magnificent water jet - its wide spray opening delivers an intense, immersive, and unique shower experience.
With a 70 mm diameter, this head shower is the perfect complement to a shower equipped with a Modular Mixer tap.*



Miscelatore **Modular Push**

L'innovativo sistema che consente di avere, in un **unico comando**, apertura/chiusura acqua e regolazione del flusso.

Modular Push Mixer

*the innovative system that allows you to open/close and adjust the water flow with **one single handle**.*



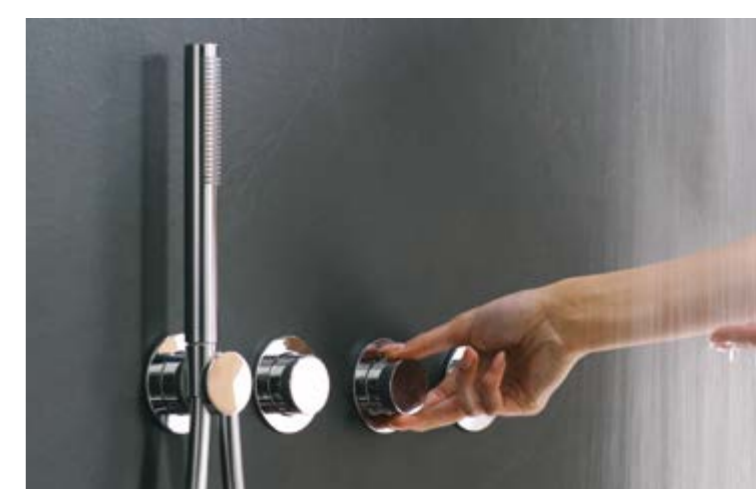
Regolazione temperatura

Temperature regulation



Apertura /chiusura getto 1

jet 1 "on/off"



Regolazione portata getto 1

Jet 1 flow regulation

MODULAR PUSH

Miscelatore Modular Push

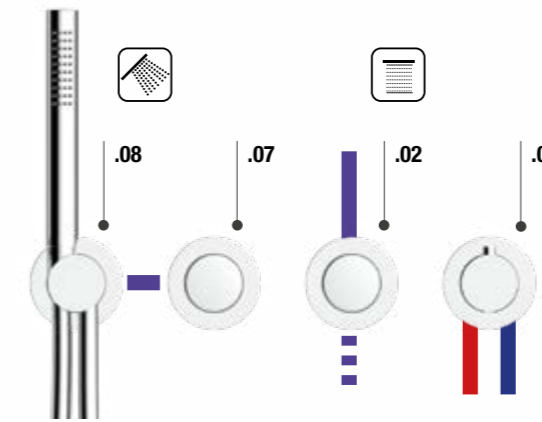
L'innovativo sistema che consente di avere, in un **unico comando**, apertura/chiusura acqua e regolazione del flusso.

Modular Push Mixer

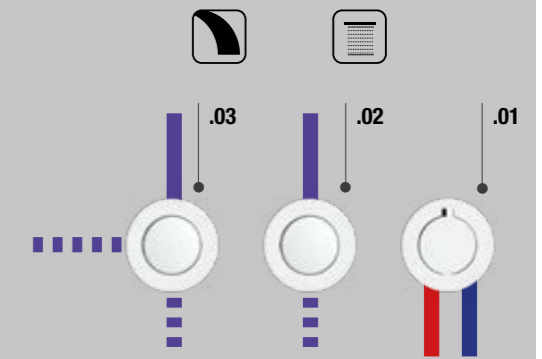
the innovative system that allows you to open/close and adjust the water flow with **one single handle**.



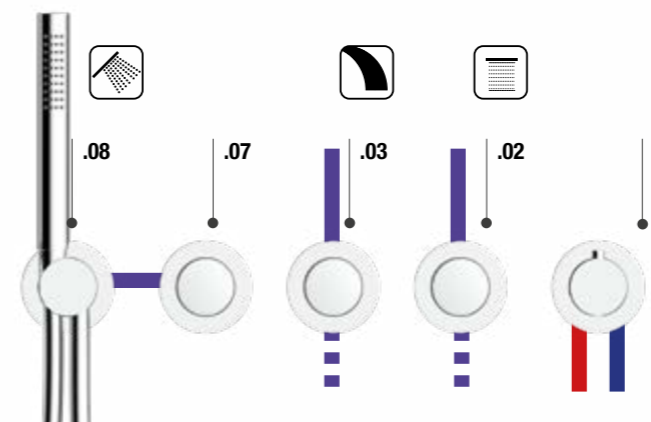
2 VIE CON DOCCIA 2-WAY WITH HAND SHOWER



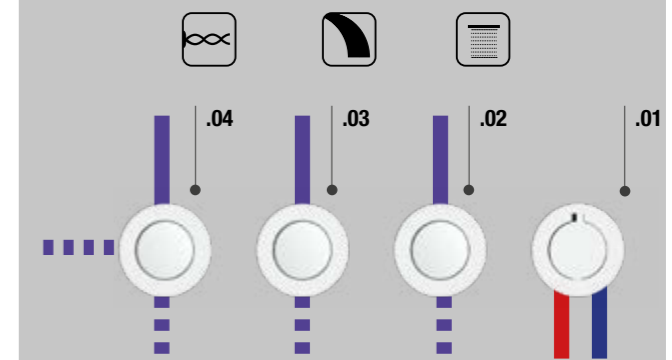
2 VIE 2-WAY



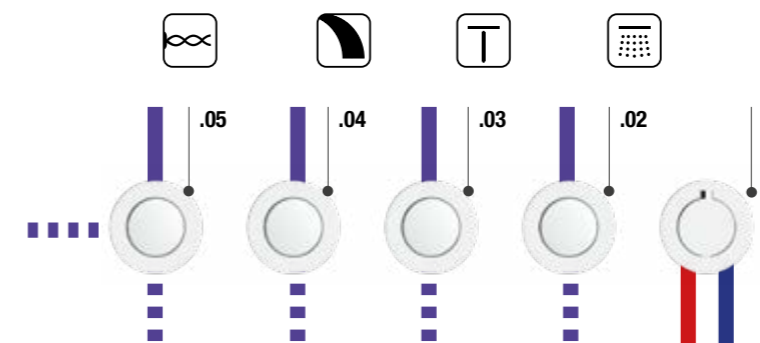
3 VIE CON DOCCIA 3-WAY WITH HAND SHOWER



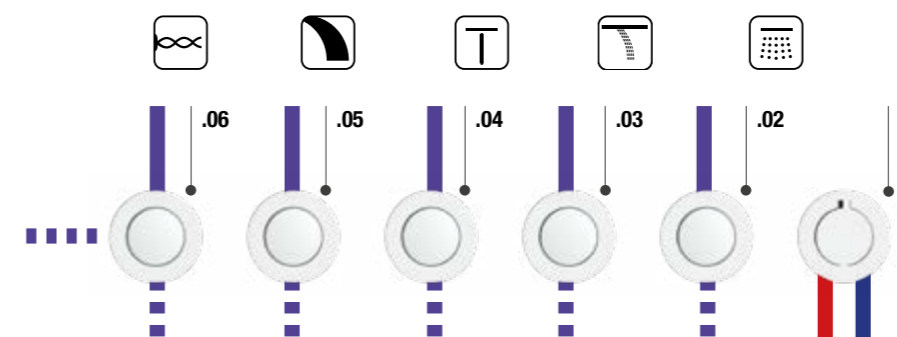
3 VIE 3-WAY



4 VIE 4-WAY



5 VIE 5-WAY



LEGENDA

- .01 regolazione temperatura
- .02 apertura/chiusura + regolazione portata getto 1
- .03 apertura/chiusura + regolazione portata getto 2
- .04 apertura/chiusura + regolazione portata getto 3
- .05 apertura/chiusura + regolazione portata getto 4
- .06 apertura/chiusura + regolazione portata getto 5
- .07 apertura/chiusura + regolazione portata doccia
- .08 presa acqua con doccia

LEGEND

- .01 flow regulation
- .02 jet 1 open/close + flow regulation
- .03 jet 2 open/close + flow regulation
- .04 jet 3 open/close + flow regulation
- .05 jet 4 open/close + flow regulation
- .06 jet 5 open/close + flow regulation
- .07 hand shower open/close + flow regulation
- .08 water outlet with shower

- | | |
|--------------|--------------|
| RAIN | WIRE |
| HAND SHOWER | ICICLE |
| XL WATERFALL | SPIN BODYJET |

soffione **Sway Tondo**
Sway Round head shower



WATER TECHNOLOGY DESIGN

doccia **Velvet**
Velvet hand shower



miscelatore **Core Push**
Core Push mixer



Soffioni Sway: quando l'acqua diventa una carezza silenziosa

L'inclinazione dei soffioni Sway è **regolabile in 3 posizioni** per il massimo del comfort

Sway head showers: when water becomes a silent caress.

The inclination of the Sway shower heads is **adjustable in 3 positions** for maximum comfort



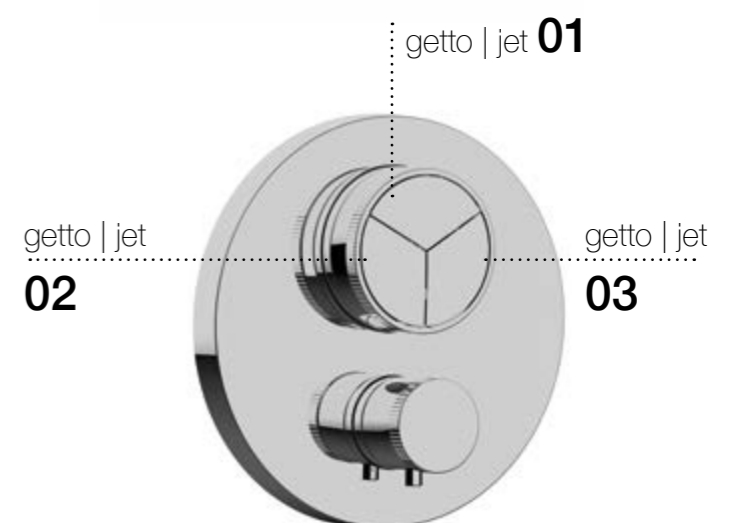
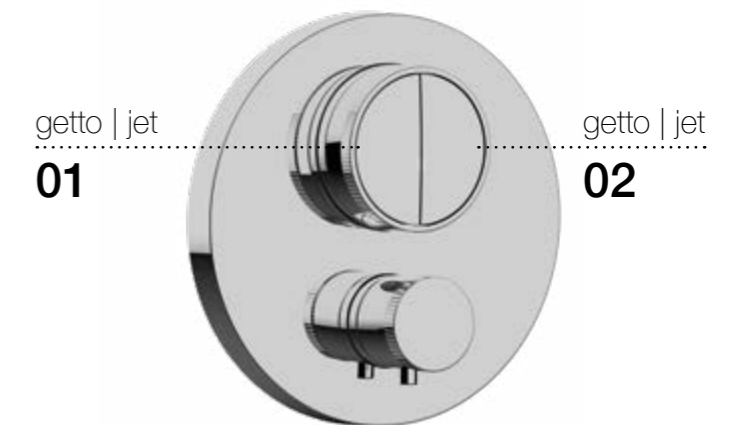
WATER
TECHNOLOGY DESIGN

Core Push

Il Core Universal Box è il vero cuore pulsante del miscelatore Core Push. **Acqua, Design e Tecnologia**, in perfetto equilibrio tra loro, sono l'anima di un prodotto dalle prestazioni sorprendenti. La nostra Tecnologia innovativa permette di avere, in un solo comando, accensione/spengimento e regolazione della portata.

Core Push

The Core Universal Box is the heart of the Core Push mixer, where **Water, Design, and Technology** are perfectly balanced to deliver exceptional performance. Our innovative system integrates on/off control and flow adjustment into a single, seamless mechanism.



CORE PUSH

L'intuizione accoglie la **semplicità. In un clic.**

Un'avanzata soluzione hi-tech permette di selezionare portata e tipo di getto con un unico comando, disponibile nella versione a due o tre funzioni, dal contorno zigrinato per una perfetta ergonomia.

When **intuition** meets **simplicity. With one click.**

An innovative hi-tech solution allows to select the flow and type of jet with a single control - available both in version with two or three functions - while the knurled metal ring ensures an ergonomic handgrip.



2-way | square plate



3-way | square plate



2-way | round plate



3-way | round plate

CLICK PULSANTE:
Selezione getti "aperto/chiuso"

BUTTON CLICK:
"Open/Closed" jets selection



ROTAZIONE GHIERA:
Regolazione portata

METAL RING ROTATION:
Flow regulation

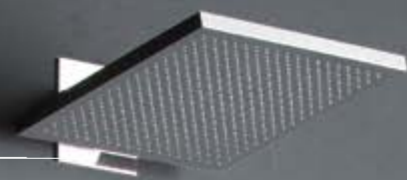


ROTAZIONE MANIGLIA
TERMOSTATICA:
Regolazione temperatura

THERMOSTAT HANDLE
ROTATION:
Temperature regulation



soffione **Sway Quadro**
Sway Square head shower



WATER TECHNOLOGY DESIGN

miscelatore **Modular Push**
Modular Push mixer



Soffioni Sway:
design e funzionalità

L'inclinazione dei soffioni Sway è
regolabile in 3 posizioni per il
massimo del comfort

Sway head shower:
design and functionality

The inclination of the Sway shower
heads is **adjustable in 3 positions**
for maximum comfort



Miscelatore **Modular Push**

Un comando che cambia l'idea di rubinetto.

Modular Push Mixer

A control that changes the style of an ordinary faucet.



soffione **Velvet**
Tondo 230
230 Velvet Round
head shower

WATER **TECHNOLOGY** **DESIGN**

doccia **Velvet 100**
Velvet 100 hand shower

miscelatore **Core Push**
Core Push mixer



Miscelatore Core Push:

un clic ed è subito relax

Un'avanzata soluzione hi-tech permette di selezionare portata e tipo di getto con un unico comando, disponibile nella versione a due o tre funzioni, dal contorno zigrinato per una perfetta impugnatura.

Core Push mixer tap:

one click is enough to relax

An innovative hi-tech solution allows to select the flow and type of jet with a single control. Available in the version with two or three functions, with a milled edging to ensure a perfect grasp.



Selezione getti "on/off"
Jets selection "on/off"



Regolazione portata
Flow regulation



Regolazione temperatura
Temperature regulation

soffione **Beam**
Beam head shower



WATER TECHNOLOGY DESIGN

doccia **Velvet**
Velvet hand shower



miscelatore **Modular Push**
Modular Push mixer



Beam multigetto

Il soffione Beam è disponibile anche in versione multigetto: ruotando la ghiera è possibile scegliere tra 3 diversi getti, con possibilità di getti combinati.

Beam multijet

The Beam head shower is also available in multijet version: rotating the ferrule, you can choose among 3 different types of jet, with the possibility of combining them.



Modular

Il miscelatore Modular Push è disponibile in svariate versioni, con o senza doccia e da 2 a 5 funzioni. Nella foto accanto Modular 5 vie.

Modular

The Modular Push mixer is available in various versions, with or without hand shower and from 2 to 5 functions. In the picture on the right Modular 5-way.



soffione
Velvet 2 funzioni
2-way Velvet head shower

WATER TECHNOLOGY DESIGN

doccia **Posh** e saliscendi
Flexi Quadro

*Posh hand shower and
Flexi Square slidebar*

miscelatore **Core**
Termostatico
Thermostat Core mixer



getto Velvet Rain

Una **pioggia sottile e vellutata**, per un effetto uniforme, avvolgente e rilassante.

Velvet Rain jet

A thin and velvety rain, for a steady, enveloping, and relaxing effect.



getto Intense Rain

Corposi fili d'acqua per un getto **intenso e profondamente rigenerante**.

Intense Rain jet

Thick water threads for a **strong and deeply regenerating jet**.

soffione **Tondo 230**
Round 230 head shower

doccia **Velvet**
Velvet hand shower

WATER TECHNOLOGY DESIGN

miscelatore **Termostatico
esterno**
External thermostat mixer



Colonna completa con termostatico esterno

La colonna doccia in ottone con termostatico esterno è completata con soffione Velvet 230 tondo e doccia Velvet.

Complete column with external thermostat

The shower column with external thermostat is completed with Velvet Round 230 head shower and Velvet hand shower.



regolazione temperatura
temperature regulation



deviatore getti
jets diverter



Un miscelatore termostatico esterno ad alta tecnologia, realizzato totalmente in Almar, **garantisce una risposta immediata e performante ai cambi di temperatura.**

*A high-tech external thermostatic mixer, entirely made by Almar, **guarantees an immediate and high-performance response to temperature changes.***



soffione **Velvet**
Quadro 300
Velvet Square 300 head
shower

WATER **TECHNOLOGY** **DESIGN**

miscelatore **Core Push**
Core Push mixer



Un getto d'acqua avvolgente
per un'esperienza doccia
intensa e unica.

*An enveloping jet for an
intense and unique shower
experience.*



WATER
TECHNOLOGY DESIGN



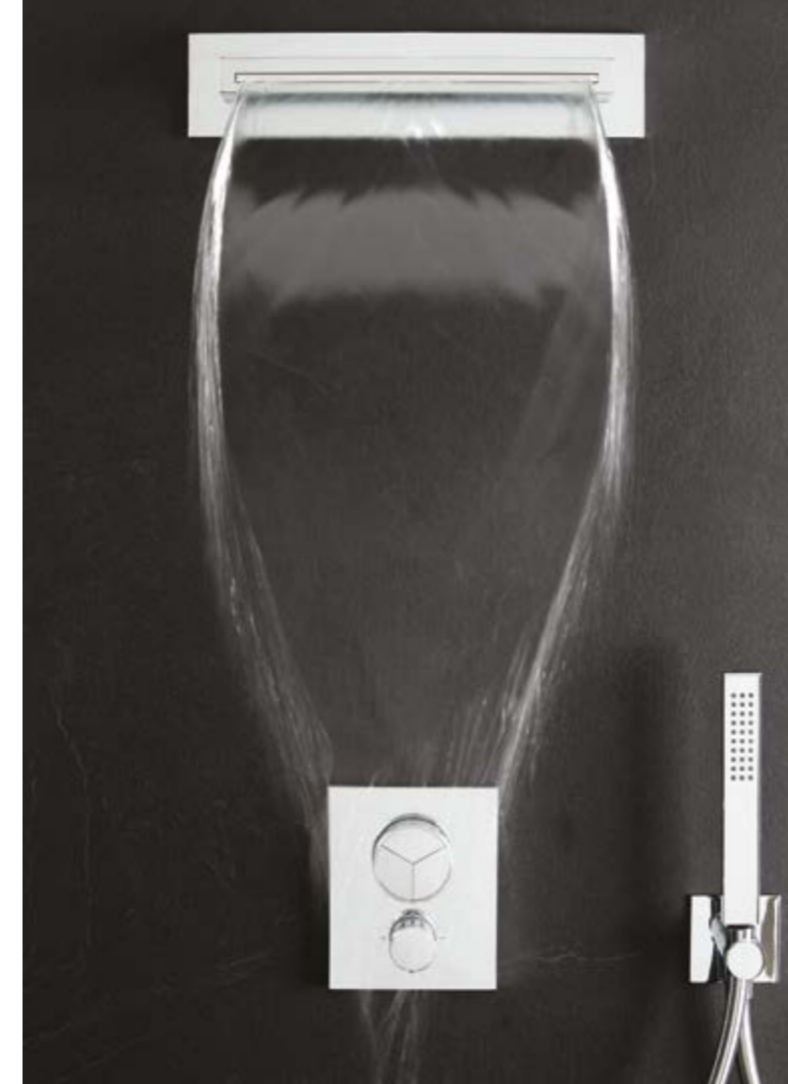
soffione **Velvet**
230 Quadro

*Velvet 230 Square head
shower*

cascata esterna **XL**
XL external waterfall

WATER TECHNOLOGY DESIGN

miscelatore **Modular Push**
Modular Push mixer

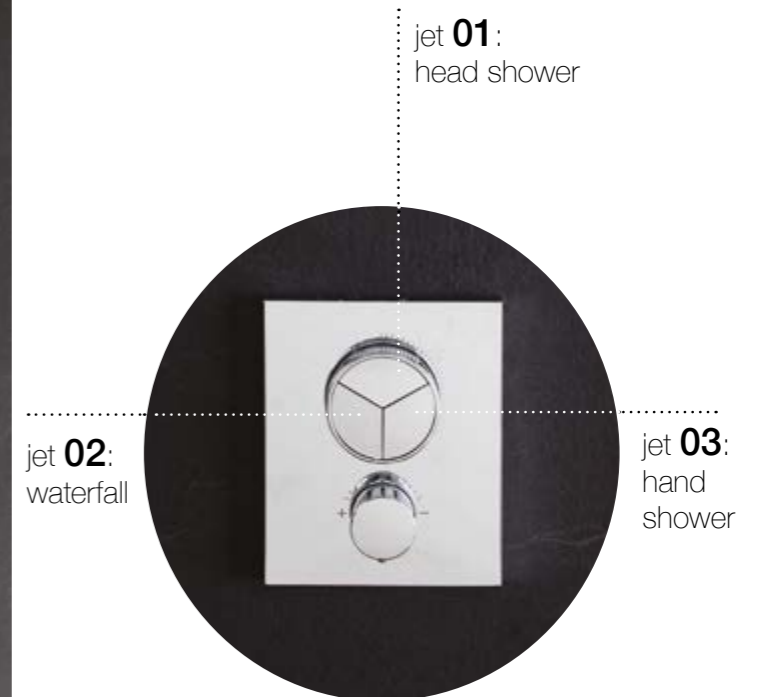


Sistema doccia 3 funzioni.

Il miscelatore Core Push è qui presentato nella versione a 3 funzioni: ciascun pulsante comanda un getto d'acqua offrendo così la possibilità di completare il sistema doccia con la cascata XL: un'ampia lama d'acqua per un'esperienza doccia completamente avvolgente e rigenerante.

3-way shower system

The Core Push mixer is available in a three-function version: with each button controlling a different water jet. This allows the addition of the XL waterfall - a wide, cascading stream that delivers a fully immersive and rejuvenating shower experience.



soffione **Velvet 2 funzioni**

2-way Velvet head shower

WATER TECHNOLOGY DESIGN

miscelatore **Core Push**

Core Push mixer

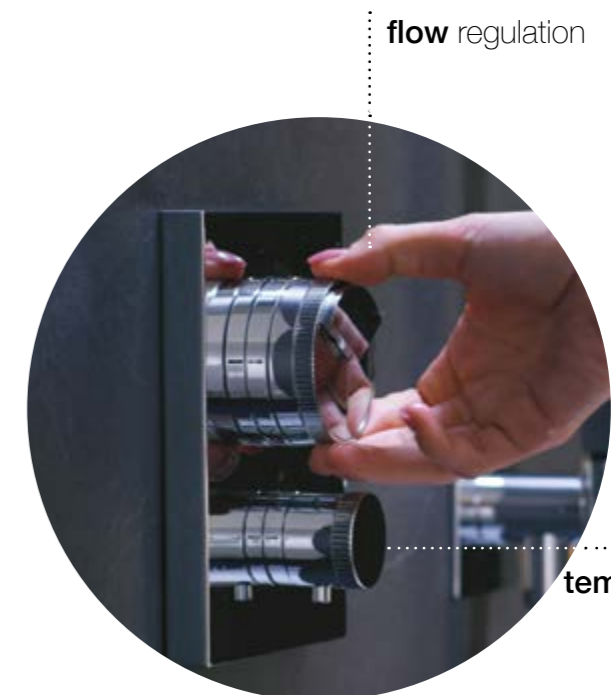


Sistema doccia a 3 funzioni

Il soffione Velvet 2 funzioni a parete affianca al **getto Velvet Rain** il **getto Intese Rain**: corposi fili d'acqua intensificano l'esperienza doccia.

3-way shower system

The Velvet two-function wall-mounted head shower pairs the **Velvet Rain Jet** with the **Intense Rain Jet**, a rich water flow that enhances the intensity of the shower experience.



flow regulation

temperature
regulation

saliscendi **Flexi Tondo**
Flexi Round slidebar

doccia **Velvet**
Velvet hand shower

WATER TECHNOLOGY DESIGN

miscelatore
Termostatico Esterno
External thermostat mixer



Sistema doccia con termostatico esterno e saliscendi

La nuova doccia Velvet è caratterizzata da un getto avvolgente.

Shower system with external thermostat and slide bar

The new Velvet hand shower is characterized by an enveloping jet.

WATER TECHNOLOGY DESIGN

docce **Velvet**
Velvet hand showers



Come tutti i prodotti della collezione Velvet, anche la gamma di docce nasce dalla responsabilità che sentiamo di avere verso l'acqua, il nostro bene più prezioso. **Testimonia come sia possibile coniugare ecologia e benessere**, riducendo il consumo idrico senza rinunciare al comfort di sempre.

Like all the products in the Velvet collection, the shower range was developed with a conscious effort to limit water waste, as water is which is one of the most precious resources. It demonstrates just how combining ecology and well-being, can reduce water waste without sacrificing comfort.

1.5
GPM
5.65 l/min



WATER TECHNOLOGY DESIGN

docce **Velvet**
Velvet hand showers



L'iconico design della nostra doccia Emotion unito all'innovativo getto Velvet si declina nelle nuove docce disponibili in due dimensioni: Ø100 e Ø130.

The iconic design of our Emotion hand shower, combined with the innovative Velvet jet, is now available in two sizes: Ø100 and Ø130.



316 COLLECTION

Perfetto equilibrio tra estetica e qualità

The perfect balance between aesthetics and quality

L'acciaio **inossidabile 316** nasce dalla sintesi perfetta di tecnologia, design, cura artigianale e rispetto per l'ambiente. AISI 316 è atossico, riciclabile al 100% e mantiene inalterata la sua impeccabile bellezza poichè resiste agli agenti abrasivi e corrosivi.

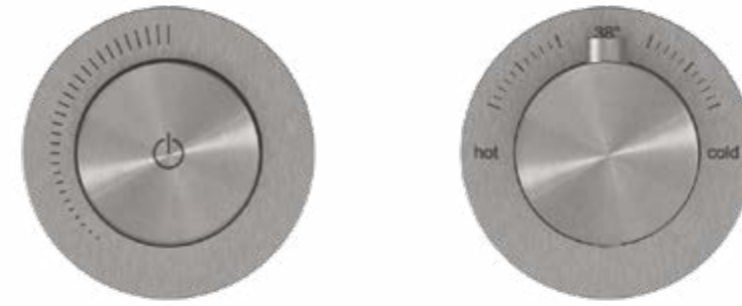
Sui prodotti in Acciaio 316 è disponibile il **trattamento estetico PVD** nei colori selezionati. I sistemi doccia da pagina 62 a pagina 105 sono in Acciaio 316.

316 Stainless Steel is the perfect synthesis of technology, design, craftsman's care and respect for the environment. AISI 316 is non-toxic, 100% recyclable and never loses its beauty because it is abrasion and corrosion resistant.

The PVD coating is available on 316 Stainless Steel in the selected colours. Shower systems from page 62 to page 105 are in 316 Stainless Steel.



ACCIAIO 316 | 316 STAINLESS STEEL

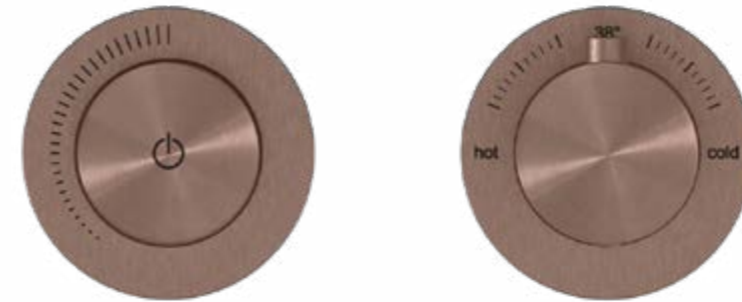


316

PVD SU ACCIAIO 316 | PVD ON 316 STAINLESS STEEL



316
PVD Gun Metal



316
PVD Copper



316
PVD High Brass



316
PVD Absolute Black

Sistema doccia 2 vie con vasca

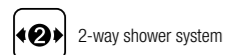
2-way wall arm shower system with bathtub

dettagli sistema doccia
shower system details

316

finiture | finishes
Acciaio 316
316 Stainless Steel

SISTEMA DOCCIA | SHOWER SYSTEM



2-way shower system

water control



Modular



Thermostat Push

water experience



Velvet Rain



Hand Shower

soffione | shower head

E044287 BEAM MONOJET WALL

doccia | hand shower

E082095 EASYSTEEL

miscelatore | water control

E176910 2-WAY MODULAR THERMOSTAT PUSH WITH HAND SHOWER
CONCEALED MODULE

E180433 2-WAY THERMOSTAT MODULAR PUSH TRIM SET WITH ROUND
ROSETTES

accessori | accessories

E310001 BATHROBE HOLDER

E305001 TOWEL HOLDER L 450



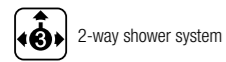
Sistema doccia parete 2 vie

2-way wall mounted shower system

dettagli sistema doccia
shower system details

316

finiture | finishes
Acciaio 316
316 Stainless Steel



2-way shower system

water control



Modular



Thermostat

water experience



Velvet Rain



Hand Shower



XL Waterfall

soffione | shower head

E044300 SWAY SQUARE

cascata | waterfall

**E003193 CONCEALED MODULE FOR XL
WATERFALL BUILT-IN**

E003194 XL WATERFALL BUILT-IN TRIM SET

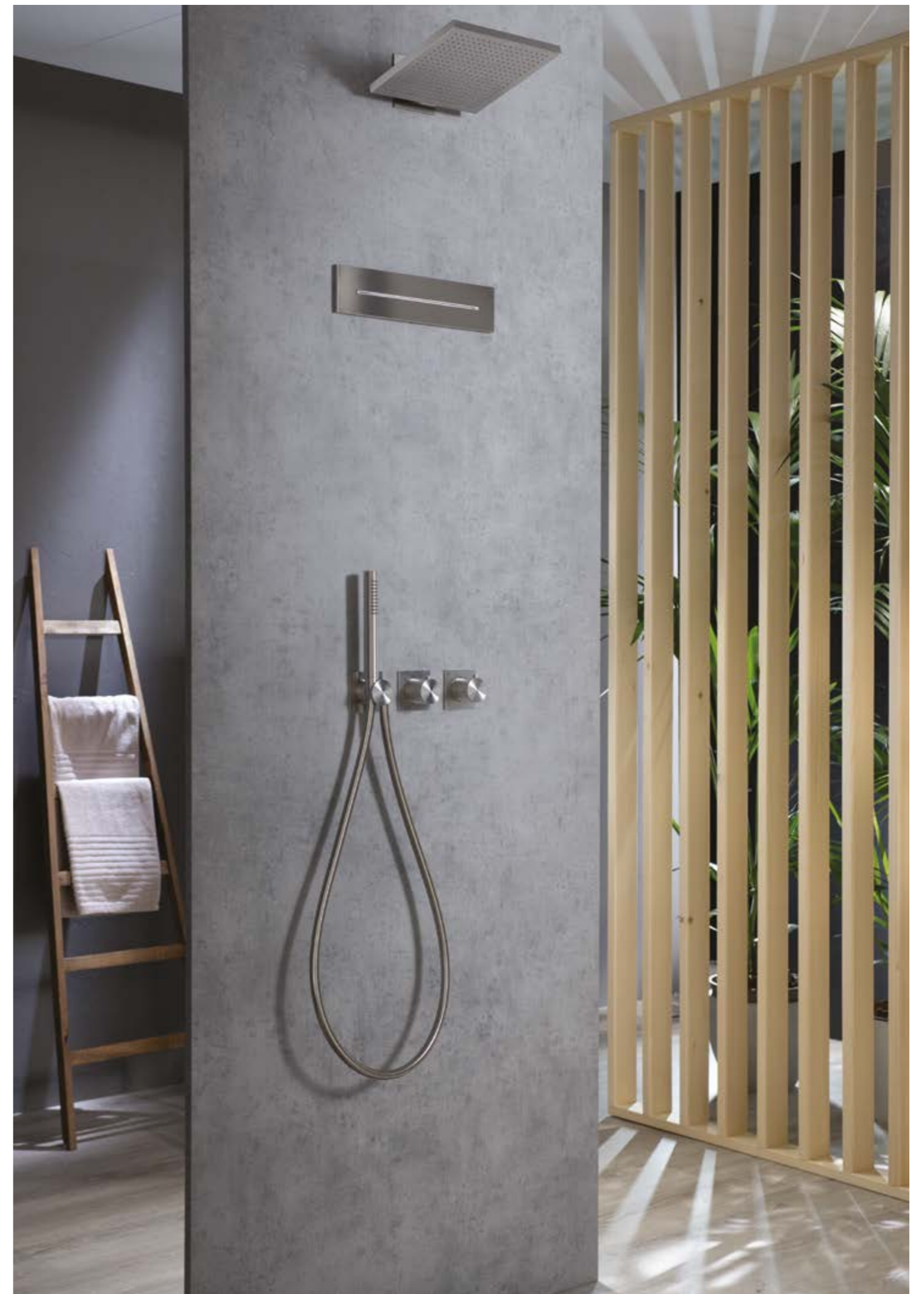
doccia | hand shower

E082095 EASYTEEL

miscelatore | water control

**E176904 3-WAY MODULAR THERMOSTAT
CONCEALED MODULE WITH HAND SHOWER**

**E180183 3-WAY MODULAR THERMOSTAT
TRIM SET**



Sistema doccia 2 vie con vasca

2-way wall arm shower system with bathtub


dettagli sistema doccia
shower system details

316

finiture | finishes

Acciaio 316
316 Stainless Steel

SISTEMA DOCCIA | SHOWER SYSTEM

 2-way shower system

water control


 Modular  Thermostat

water experience

 Rain

 Hand Shower

SISTEMA VASCA | BATHTUB SYSTEM

 2-way bathtub system

water control

 Modular  Thermostat

DOCCIA | SHOWER

soffione | shower head

E044072 EMOTION ROUND 300

braccio | shower arm

E021093 ROUND ARM WITH ROUND ROSETTE L350 MM

doccia | hand shower

E310001 BATHROBE HOLDER

miscelatore | water control

E176903 2-WAY MODULAR THERMOSTAT CONCEALED MODULE WITH HAND SHOWER

E180133 2-WAY MODULAR TRIM SET WITH ROUND ROSETTES

VASCA | BATHTUB

miscelatore | water control

E169003 2-WAY MODULAR THERMOSTAT CONCEALED MODULE FOR BATHTUB

E180135 2-WAY MODULAR ROUND ROSETTES AND ROUND HANDLES TRIM SET FOR BATHTUB





Miscelatore Modular

In alto Modular in versione termostatica per bordo vasca, il modulo deviatore 2 funzioni comanda canna di erogazione e doccia.

A sinistra Modular termostatico per doccia: il modulo deviatore 2 funzioni comanda soffione e doccia.



Modular Mixer

In the image above Modular thermostat for bathtub: the diverter controls bath spout and hand shower.

In the image on the left Modular thermostat for shower: the diverter controls head shower and hand shower.



Ambiente bagno

Bathroom ambience

dettagli sistema
system details

316

finiture | finishes

Acciaio 316 e Nickel Brushed
316 Stainless Steel and Brushed Nickel

placca wc | wc plate

E330001 WC PLATE WITH RECTANGULAR
BUTTONS

wc mixer

E183003 WC MIXER WITH STAND TRIMS
E134004 CONCEALED MODULE FOR WC
MIXER

accessori | accessories

E082110 ATTHIS SHUT OFF
C084086 FLEX FOR SHUT OFF L120 CM
E315000 TOILET PAPER HOLDER



Sistema doccia con termostatico esterno


shower system with external Thermostat

dettagli sistema doccia
shower system details

316

finiture | finishes
Acciaio 316
316 Stainless Steel

SISTEMA DOCCIA | SHOWER SYSTEM

 2 way shower system (deviatore nel termostatico | diverter in the thermostat)

water control

 Thermostat

water experience

 Velvet Rain

 Hand Shower



colonna | shower column
soffione | head shower
doccia | hand shower
flessibile | flex hose

E404000 SHOWER COLUMN WITH EXTERNAL THERMOSTAT

E044290 VELVET 230 ROUND

E082095 EASYSTEEL

C084021 316 STAINLESS STEEL FLEX





regolazione temperatura
flow regulation

deviatore getti
jet diverter



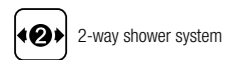
Sistema doccia parete 2 vie

2-way wall mounted shower system

dettagli sistema doccia
shower system details

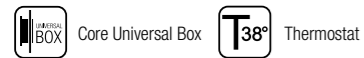
316

finiture | finishes
Acciaio 316
316 Stainless Steel



2-way shower system

water control



Core Universal Box Thermostat

water experience



Rain



Hand Shower

saliscendi | slidebar
termostatico | thermostat
doccia | hand shower
flessibile | flex hose

E087076 SLIDEBAR WITH SQUARE ROSETTES L900 mm
E400002 EXTERNAL THERMOSTAT
E082095 EASYSTEEL
C084021 316 STAINLESS STEEL FLEX



regolazione
temperatura

on/off



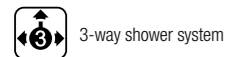
Sistema doccia parete 3 vie

3-way wall mounted shower system

dettagli sistema doccia
shower system details

316

finiture | finishes
Acciaio 316
316 Stainless Steel



3-way shower system

water control



Core
Universal Box



Thermostat

water experience



Rain



Cascade



Hand Shower

soffione | shower head

E044199 SMART DUAL FLOW

doccia | hand shower

E082095 EASYSTEEL

presa acqua | water outlet

**E095034 WATER OUTLET WITH STAND AND SQUARE
ROSETTE**

flessibile | flex hose

C084052 316 STAINLESS STEEL FLEX

accessori | accessories

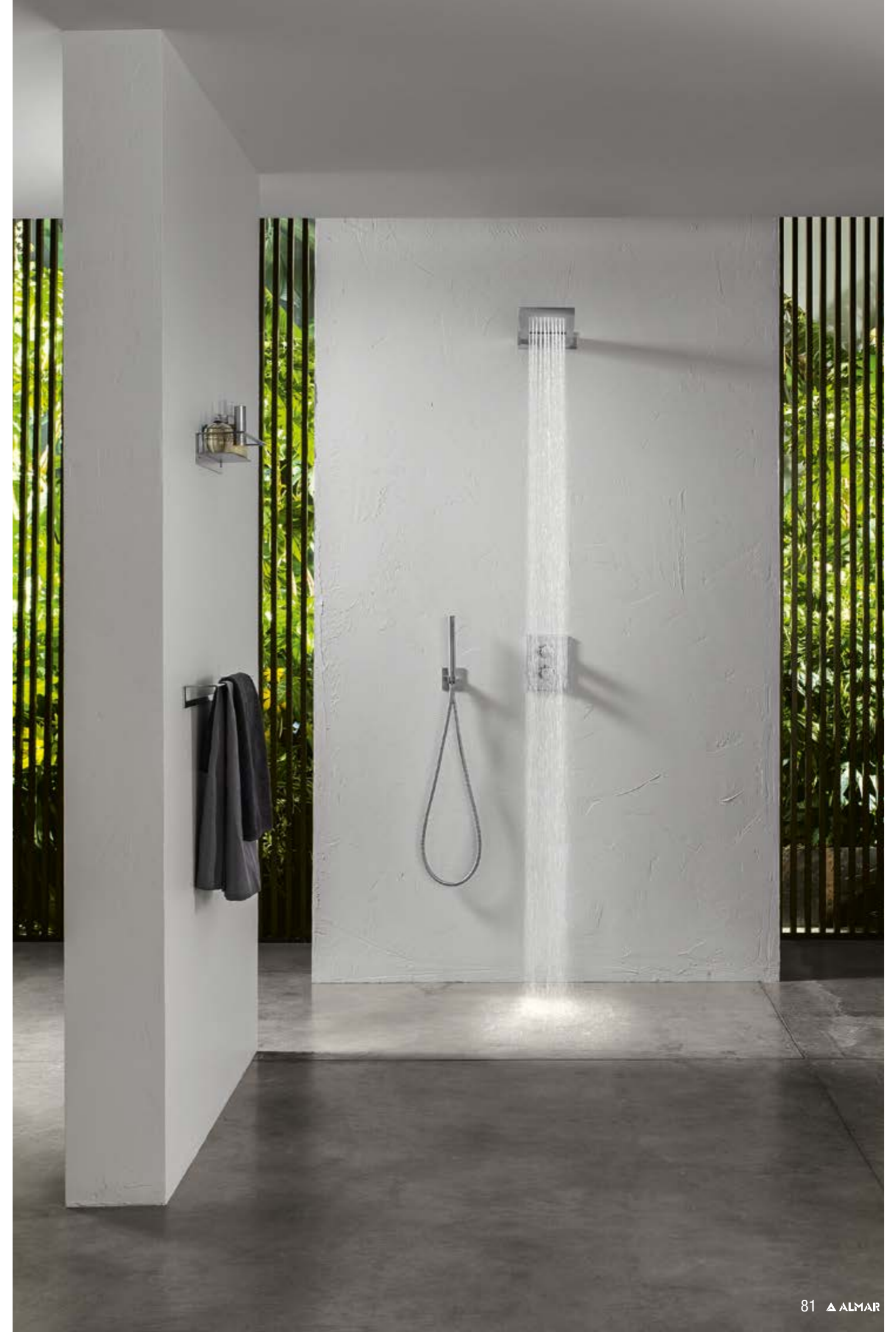
E300001 SOAP & BEAUTY

E305003 TOWEL HOLDER

miscelatore | water control

E134001 CORE UNIVERSAL BUILT-IN BOX

E176883 3-WAY SQUARE THERMOSTAT TRIM SET



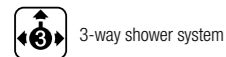
Sistema doccia parete 3 vie

3-way wall mounted shower system

dettagli sistema doccia
shower system details

316

finiture | finishes
Acciaio 316
316 Stainless Steel



3-way shower system

water control



High Flow
Built-in Box



Thermostat

water experience



Rain



Cascade



Hand Shower

soffione | shower head

E044024 TEMPTATION SQUARE 500 MONOJET

cascata | waterfall

E044086 WATERFALL EXTERNAL

doccia | hand shower

E082095 EASYSTEEL

presa acqua | water outlet

E095034 WATER OUTLET WITH STAND AND SQUARE ROSETTE

flessibile | flex hose

C084052 316 STAINLESS STEEL FLEX

accessori | accessories

E305001 TOWEL HOLDER L450

miscelatore | water control

E176003 3-WAY HIGH FLOW CONCEALED MODULE

E180083 HIGH FLOW ROUND ON SQUARE TRIM SET



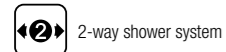
Sistema doccia parete 2 vie

2-way wall mounted shower system

dettagli sistema doccia
shower system details

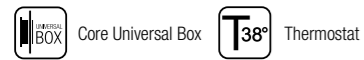
316

finiture | finishes
Acciaio 316
316 Stainless Steel



2-way shower system

water control



Core Universal Box



Thermostat

water experience



Rain



Hand Shower

soffione | shower head

E044072 EMOTION ROUND 300 mm

braccio | arm shower

E021095 ROUND ARM WITH SQUARE ROSETTE L350 mm

doccia | hand shower

E082095 EASYSTEEL

presa acqua | water outlet

E095034 WATER OUTLET WITH STAND AND SQUARE ROSETTE

flessibile | flex hose

C084052 316 STAINLESS STEEL FLEX

miscelatore | water control

E134001 CORE UNIVERSAL BUILT-IN BOX

E186582 2-WAY CORE SINGLE LEVER MIXER TRIM SET WITH AUTOMATIC DIVERTER



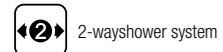
Sistema doccia parete 2 vie

2-way wall mounted shower system

dettagli sistema doccia
shower system details

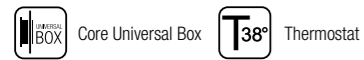
316

finiture | finishes
Acciaio 316
316 Stainless Steel



2-way shower system

water control



Core Universal Box



Thermostat

water experience



Rain



Hand Shower

soffione | shower head

E044234 SQUARE EMOTION 250

braccio | arm shower

E021094 ROUND ARM WITH SQUARE ROSETTE L300

doccia | hand shower

E082095 EASYTEEL

presa acqua | water outlet

E095034 WATER OUTLET WITH STAND AND SQUARE ROSETTE

flessibile | flex hose

C084052 316 STAINLESS STEEL FLEX

miscelatore | water control

E134001 CORE UNIVERSAL BUILT-IN BOX

E176882 2-WAY CORE THERMOSTAT ROUND ON SQUARE TRIM SET



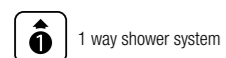
Sistema doccia saliscendi sliding rail shower system

con presa acqua esterna
with external water inlet

dettagli sistema doccia
shower system details

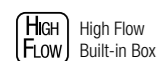
316

finiture | finishes
Acciaio 316
316 Stainless Steel



1 way shower system

water control



High Flow
Built-in Box



Thermostat

water experience



Hand Shower

saliscendi | sliding rail

E087073 SLIDEBAR WITH ROUND ROSETTES
L900 mm

doccia | hand shower

E082095 EASYSTEEL

presa acqua | water outlet

E095033 WATER OUTLET WITH ROUND ROSETTE

flessibile | flex hose

C084052 316 STAINLESS STEEL FLEX

miscelatore | water control

E176001 1-WAY HIGH FLOW CONCEALED BOX

E180031 1-WAY HIGH FLOW ROUND TRIM SET



Sistema doccia saliscendi sliding rail shower system

con presa acqua integrata
with water inlet

dettagli sistema doccia
shower system details

316

finiture | finishes
Acciaio 316
316 Stainless Steel



1 way shower system

water control



Core Universal Box



Thermostat

water experience



Hand Shower

saliscendi | sliding rail

E087069 SLIDEBAR WITH WATER OUTLET
AND SQUARE ROSETTES L810 mm

doccia | hand shower

E082095 EASYSTEEL

flessibile | flex hose

C084052 316 STAINLESS STEEL FLEX

miscelatore | water control

E134001 CORE UNIVERSAL BUILT-IN BOX

E166581 1-WAY CORE SINGLE LEVER

MIXER TRIM SET



Sistema doccia **2 vie** | **PVD Absolute Black** su acciaio 316

2-way shower system | **PVD Absolute Black** on 316 stainless steel

dettagli sistema doccia
shower system details

PVD
on
316

finiture | finishes
PVD Absolute Black
su Acciaio 316
PVD Absolute Black
on 316 Stainless Steel



SISTEMA DOCCIA | SHOWER SYSTEM



2-way shower system

water control



Core
Universal Box



Thermostat Push

water experience



Velvet Rain



Hand Shower - Velvet

colonna | shower column

E404000 SHOWER COLUMN WITH EXTERNAL THERMOSTAT

soffione | head shower

E044290 VELVET ROUND 230

doccia | hand shower

E082095 EASYSTEEL

flessibile | flex hose

C084021 FLEX L150 MM

rubinetteria lavabo | sink taps

E214002 HIGH VERSION SINGLE LEVER MIXER



PVD
on
316

INSPIRATIONS 316 PVD



Sistema doccia **3 vie** con vasca | **PVD Copper** su Acciaio 316

3-way shower system with bathtub | **PVD Copper** on 316 Stainless Steel

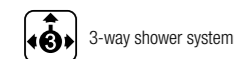
dettagli sistema doccia
shower system details

PVD
on
316

finiture | finishes

PVD Copper
su Acciaio 316
PVD Copper
on 316 Stainless Steel

SISTEMA DOCCIA | SHOWER SYSTEM



3-way shower system

water control



Modular System



Single Lever Mixer

water experience



Velvet Rain

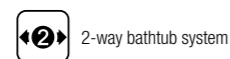


XL Waterfall



Hand Shower

SISTEMA VASCA | BATHTUB SYSTEM



2-way bathtub system

water control



Modular System



Thermostat

DOCCIA | SHOWER

soffione | shower head

E044278 VELVET SQUARE 300

braccio | shower arm

E021104 ROUND ARM WITH SQUARE ROSETTE L420 mm

cascata | waterfall

E044273 XL WATERFALL EXTERNAL

accessori | accessories

E310001 BATHROBE HOLDER

miscelatore | water control

E186904 3-WAY MODULAR SINGLE LEVER MIXER CONCEALED MODULE WITH HAND SHOWER

E180192 3-WAY MODULAR SINGLE LEVER MIXER SQUARE ROSETTE AND ROUND HANDLES TRIM SET WITH HAND SHOWER

VASCA | BATHTUB

miscelatore | water control

E169003 2-WAY MODULAR THERMOSTAT CONCEALED MODULE FOR BATHTUB

E180185 2-WAY MODULAR THERMOSTAT SQUARE ROSETTES AND ROUND HANDLES SQUARE TRIM SET FOR BATHTUB







Sistema doccia 2 vie | PVD High Brass su Acciaio 316

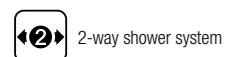
2-way shower system | PVD High Brass on 316 stainless steel

dettagli sistema doccia
shower system details

PVD
on
316

finiture | finishes

PVD High Brass
su Acciaio 316
PVD High Brass
on 316 Stainless Steel



2-way shower system

water control



High Flow
Built-in Box



Thermostat

water experience



Rain



Hand Shower

soffione | shower head

E044252 EMOTION ROUND 250

braccio | wall arm

E021093 ROUND ARM WITH ROUND ROSETTE L350

doccia | hand shower

E082095 EASYSTEEL

presa acqua | water outlet

E095032 WATER OUTLET WITH STAND AND ROUND ROSETTE

flessibile | flex hose

C084052 316 STAINLESS STEEL FLEX

miscelatore | water control

E176502 2-WAY HIGH FLOW CONCEALED MODULE WITH DIVERTER

E180031 2-WAY HIGH FLOW ROUND TRIM SET



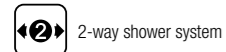
Sistema doccia soffitto 2 vie

2-way ceiling shower system

dettagli sistema doccia
shower system details

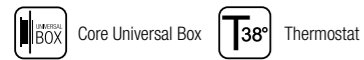
PVD
on
316

finiture | finishes
PVD Copper
su Acciaio 316
PVD Copper
on 316 Stainless Steel



2-way shower system

water control



Core Universal Box



Thermostat

water experience



Rain



Hand Shower

soffione | shower head

E044234 EMOTION SQUARE 250

braccio | wall arm

E021094 ROUND ARM WITH SQUARE ROSETTE L 300

doccia | hand shower

E082095 EASYSTEEL

presa acqua | water outlet

E095034 WATER OUTLET WITH STAND AND SQUARE ROSETTE

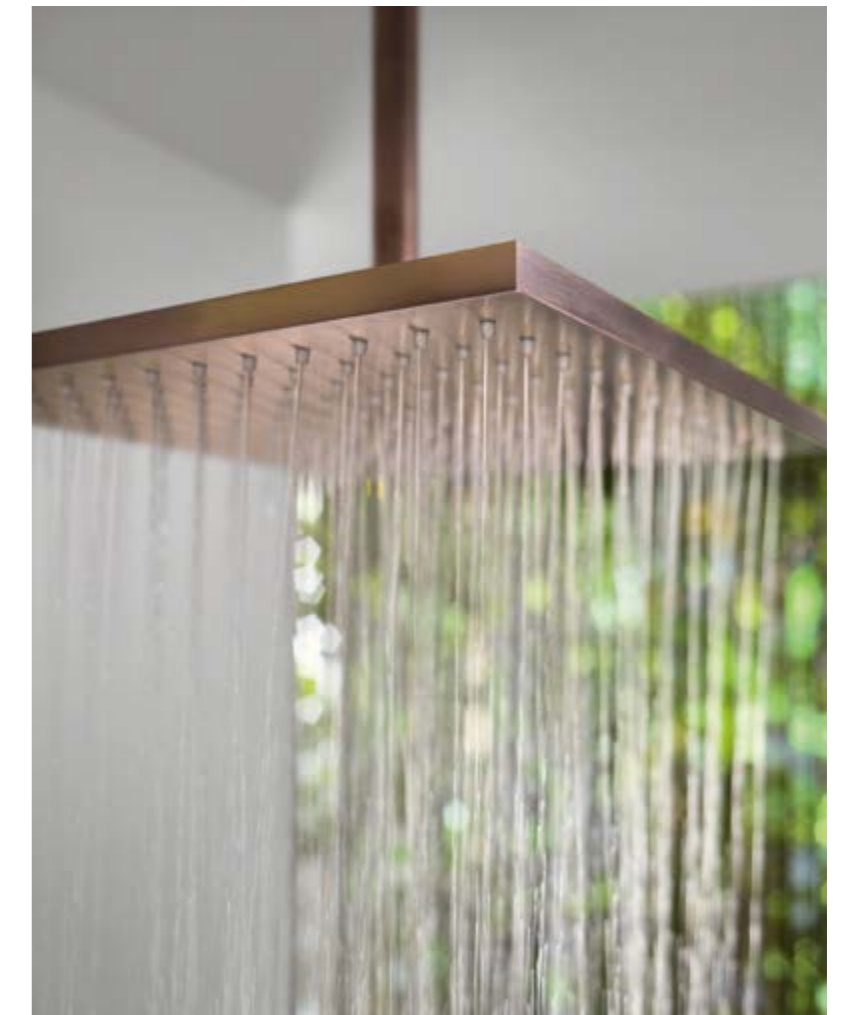
flessibile | flex hose

C084052 316 STAINLESS STEEL FLEX

miscelatore | water control

E134001 CORE UNIVERSAL BUILT-IN BOX

E176882 2-WAY CORE THERMOSTAT SQUARE TRIM SET



Sistema doccia incasso 3 vie

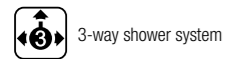
3-way built-in shower system

dettagli sistema doccia
shower system details

PVD
on
316

finiture | finishes

PVD Gun Metal
su Acciaio 316
PVD Gun Metal
on 316 Stainless Steel



3-way shower system

water control



Core Universal Box



Thermostat

water experience



Rain



Waterfall



Hand Shower

soffione | shower head

E044109 TEMPTATION CASCADE SQUARE 500 DUAL FLOW

doccia | hand shower

E082095 EASYSTEEL

presa acqua | water outlet

E095034 WATER OUTLET WITH STAND AND SQUARE
ROSETTE

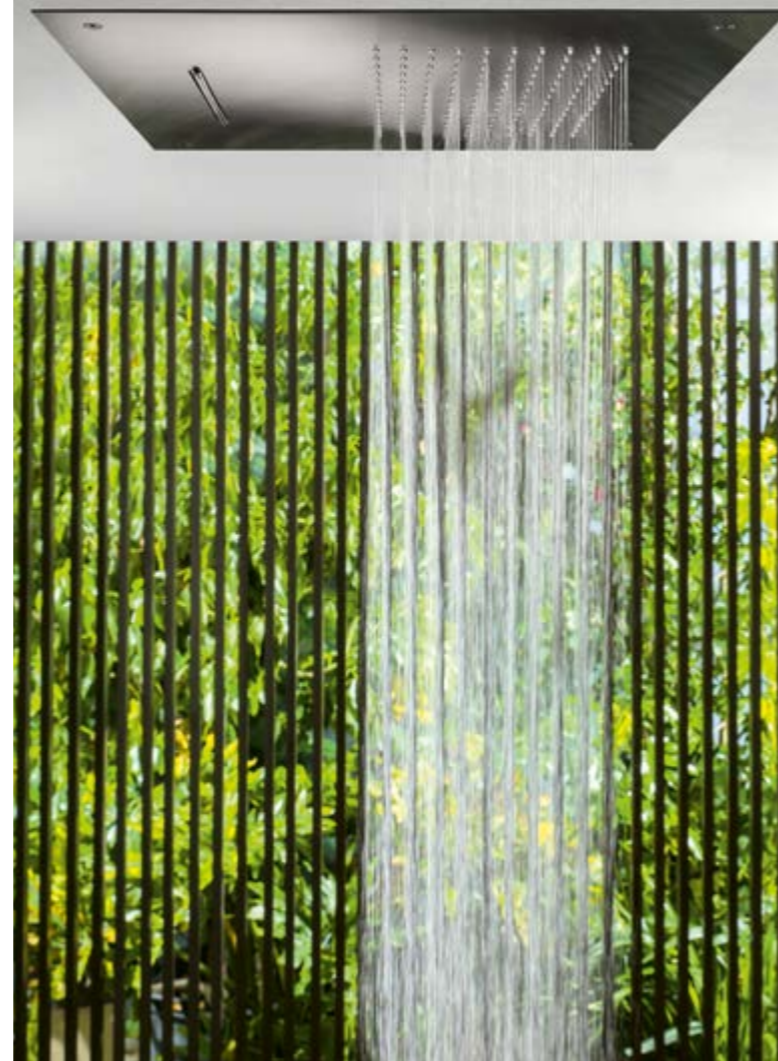
flessibile | flex hose

C084052 316 STAINLESS STEEL FLEX

miscelatore | water control

E134001 CORE UNIVERSAL BUILT-IN BOX

E176883 3-WAY CORE THERMOSTAT SQUARE TRIM SET



FINITURE

FINISHES

Per ALMAR,
ogni dettaglio fa la differenza.

*For ALMAR,
every detail makes the difference.*

PVD SPAZZOLATO | BRUSHED PVD



PVD Gun Metal



PVD Copper



PVD High Brass



PVD Absolute Black

RIVESTIMENTO PVD

PVD COATING

RIVESTIMENTO PVD

ALMAR è tra le prime aziende in Italia, e tra le poche in Europa, a introdurre all'interno dei suoi processi produttivi una lavorazione che cambierà l'idea di rivestimento: il **PVD** (Physical Vapor Deposition).

Ottenuto dall'evaporazione dei metalli che compongono lo strato di rivestimento esterno, il PVD **migliora le caratteristiche funzionali del prodotto**, rendendolo più duraturo e resistente agli agenti atmosferici.

L'intero processo PVD è **sicuro ed ecosostenibile**: non produce scorie di lavorazione e non utilizza materiali tossici.

Il rivestimento PVD Brushed è disponibile anche nella collezione Acciaio 316.

PVD COATING

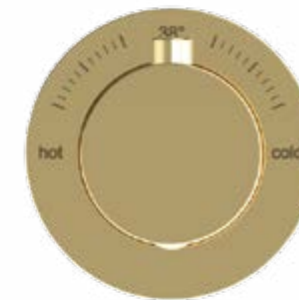
*ALMAR is one of the first companies in Italy, and one of the few in Europe, that introduced in its production stages a processing that will change the idea of coating: the **PVD** (Physical Vapor Deposition).*

*Obtained from the evaporation of the metals constituting the external coating layer, the PVD **improves the functional features of the product**, making it more lasting and resistant to atmospheric agents.*

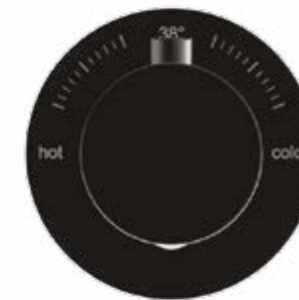
*The whole PVD process is **safe and ecologically sustainable**: it does not produce processing waste and does not use toxic materials.*

The coating PVD Brushed is also available in the 316 Stainless Steel Collection.

PVD LUCIDO | POLISHED PVD



PVD Gold



PVD Deep Black

INSPIRATIONS PVD



Soluzione Bagno Bathroom

dettagli ambiente bagno
bathroom details

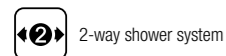


finiture | finishes

PVD Spazzolato Copper
PVD Brushed Copper



SISTEMA DOCCIA | SHOWER SYSTEM



water control



Modular System



Thermostat Push

water experience

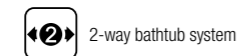


Velvet Rain



Hand Shower - Velvet

SISTEMA VASCA | BATHTUB SYSTEM



water control



Thermostat

soffione | shower head

E044306 VELVET 300 ROUND

braccio | arm shower

E021115 ROUND ARM WITH ROUND ROSETTE L450 mm

miscelatore | water control

E176910 2-WAY THERMOSTAT MODULAR PUSH WITH HAND SHOWER

doccia | hand shower

E180433* 2-WAY THERMOSTAT MODULAR PUSH TRIM SET

wc mixer

E082126 VELVET HAND SHOWER

E136010 ATHENA SHUT OFF KIT WITH WC MIXER

accessori | accessories

E134004 CONCEALED MODULE FOR WC MIXER

E310002 BATHROBE HOLDER

E300003 SOAP&BEAUTY HOLDER

E330002 WC PLATE WITH ROUND BUTTONS

E315001 TOILET PAPER HOLDER

E305004 TOWEL HOLDER L300 mm

E068005 BRUSH HOLDER WALL

E340001 LIQUID SOAP DISPENSER WALL

E070001 CUP HOLDER WALL

rubinetteria lavabo | sink taps

E210057 3-HOLE WASH BASIN MIXER LONG SPOUT

E134010 CONCEALED MODULE FOR WASH BASIN

***NOTA BENE:** il miscelatore Modular E180433 è venduto con in dotazione la doccia Easybrass E082091.

PLEASE NOTE: Modular Mixer E180433 is sold equipped with the hand shower Easybrass E082091.







INSPIRATIONS PVD

Soluzione bagno bathroom ambience

dettagli ambiente bagno
bathroom details



finiture | finishes

PVD Spazzolato High Brass
PVD Brushed High Brass



SISTEMA DOCCIA | SHOWER SYSTEM



2-way shower system

water control



Modular System



Thermostat Push

water experience



Velvet Rain



Hand Shower - Velvet

soffione | shower head

E044301 SWAY ROUND

miscelatore | water control

E176910 2-WAY MODULAR THERMOSTAT PUSH WITH HAND SHOWER

E180433 2-WAY MODULAR THERMOSTAT PUSH TRIM SET WITH HAND SHOWER

E300001 SOAP&BEAUTY HOLDER

E310001 BATHROBE HOLDER

accessori | accessories

E315000 TOILET PAPER HOLDER

E330001 WC PLATE WITH RECTANGULAR BUTTONS

rubinetteria lavabo | sink taps

E214002 SINGLE LEVER MIXER WASH BASIN

***NOTA BENE:** il miscelatore Modular E180433 è venduto con in dotazione la doccia Easybrass E082091.

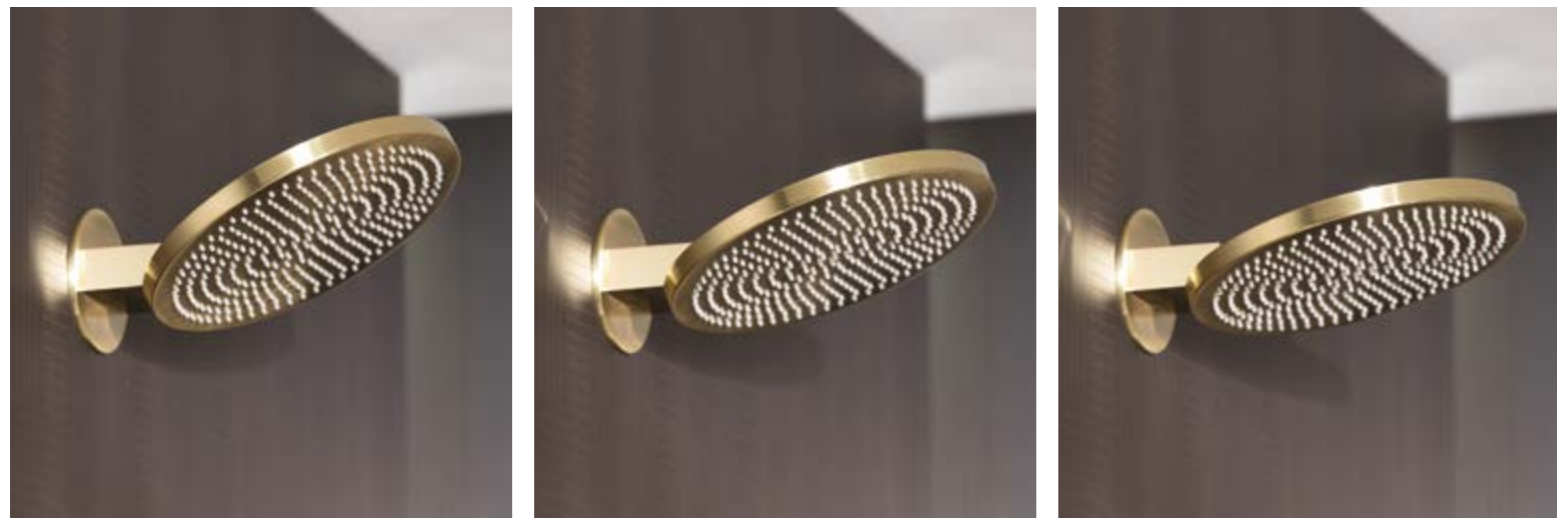
PLEASE NOTE: Modular Mixer E180433 is sold equipped with the hand shower Easybrass E082091.







Il soffione Sway è regolabile in 3 posizioni.
Sway head shower is adjustable in 3 positions.



Ambiente bagno 2 vie

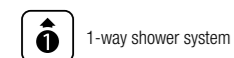
2-way bathroom ambience

dettagli
details

finiture | finishes

PVD Spazzolato Absolute Black
PVD Brushed Absolute Black

SISTEMA | SYSTEM



water experience



rubinetteria vasca | bathtub taps

E216000 FREE-STANDING BATHTUB MIXER

E134009 CONCEALED MODULE FOR FREE-STANDING BATHTUB MIXER

rubinetteria lavabo | sink taps

E214002 SINGLE LEVER MIXER WASH BASIN

***NOTA BENE:** la colonna free-standing E216000 è venduta con in dotazione la doccia Easybrass E082091.

PLEASE NOTE: the free-standing column E216000 is sold equipped with the hand shower Easybrass E082091.

▲ ALMAR 122



PVD

INSPIRATIONS PVD



Sistema doccia parete 2 vie

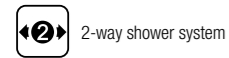
2-way wall arm shower system

dettagli sistema doccia
shower system details

finiture | finishes

PVD Lucido Deep Black
PVD Polished Deep Black

SISTEMA DOCCIA | SHOWER SYSTEM



2-way shower system

water control



Core
Universal Box



Thermostat Push

water experience



Velvet Rain



Hand Shower

soffione | shower head

E044298 VELVET 230 SQUARE - BRASS

braccio | shower arm

E021112 ROUND ARM WITH SQUARE ROSETTE L 350

doccia | hand shower

E082094 THIN BRASS

presa acqua | water outlet

E095039 ROUND WATER OUTLET WITH SQUARE ROSETTE

flessibile | flex hose

C084043 BLACK PVC FLEX - L 150 CM

accessori | accessories

E300001 SOAP&BEAUTY HOLDER

miscelatore | water control

E134001 CORE UNIVERSAL BUILT-IN BOX

E176682 2-WAY CORE THERMOSTAT PUSH SQUARE TRIM SET





Sistema doccia **2 vie** con vasca


2-way wall arm shower system with bathtub

dettagli sistema doccia
shower system details

finiture | finishes

PVD Spazzolato Gun Metal
PVD Brushed Gun Metal

SISTEMA DOCCIA | SHOWER SYSTEM

 2-way shower system

water control


 Modular System  Thermostat

water experience

 Velvet Rain

 Intense Rain

SISTEMA VASCA | Bathtub system

 2-way bathtub system

water control

 Modular System  Thermostat

DOCCIA | SHOWER

soffione | shower head

E044277 EMOTION VELVET DUAL FLOW

accessori | accessories

E310001 BATHROBE HOLDER

miscelatore | water control

E176906 2-WAY MODULAR CONCEALED THERMOSTAT MODULE

E180182 2-WAY MODULAR SQUARE TRIM SET WITH SQUARE ROSETTES AND ROUND HANDLES

VASCA | BATHTUB

miscelatore | water control

E169000 2-WAY MODULAR THERMOSTAT CONCEALED MODULE WITH HAND SHOWER

E180186 2-WAY MODULAR SQUARE TRIM SET WITH HAND SHOWER







Miscelatore Modulare

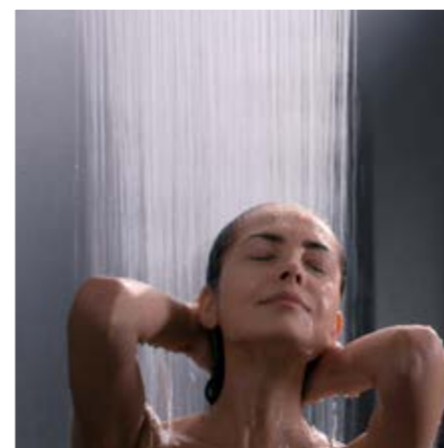
Modular termostatico bordo vasca 2 funzioni: il controllo dell'acqua è gestito dalle due maniglie che regolano canna e doccia, le due uscite sono indipendenti e possono quindi funzionare contemporaneamente.

Modular Mixer

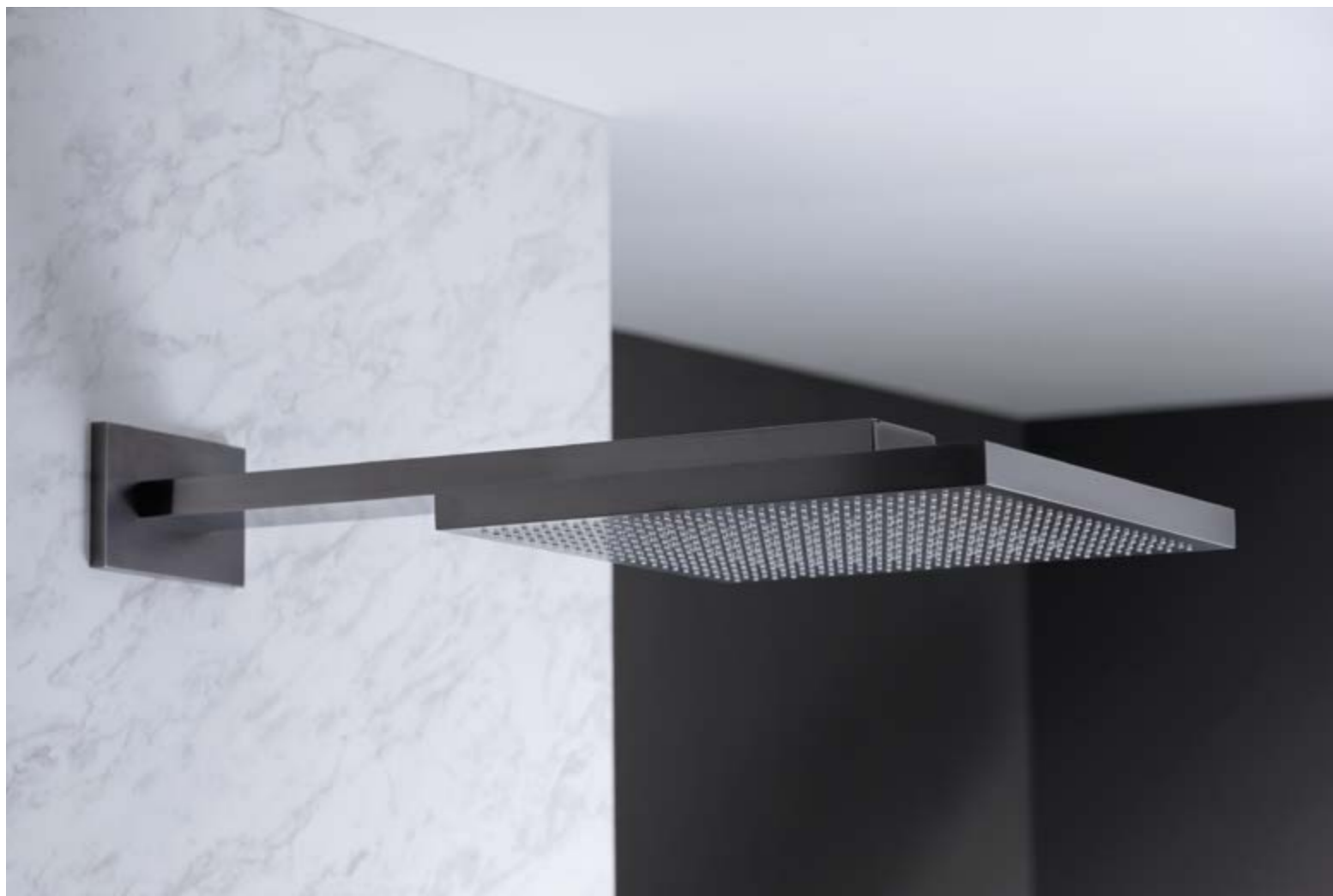
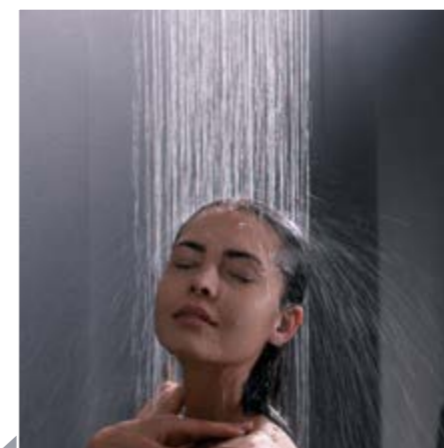
2-way Thermostat Modular for bathtub: water control is managed by the two diverters for spout and hand shower, these are two independent ways so is possible to use them simultaneously.

Soffione Velvet 2 funzioni | 2-way Velvet head shower

Velvet Rain

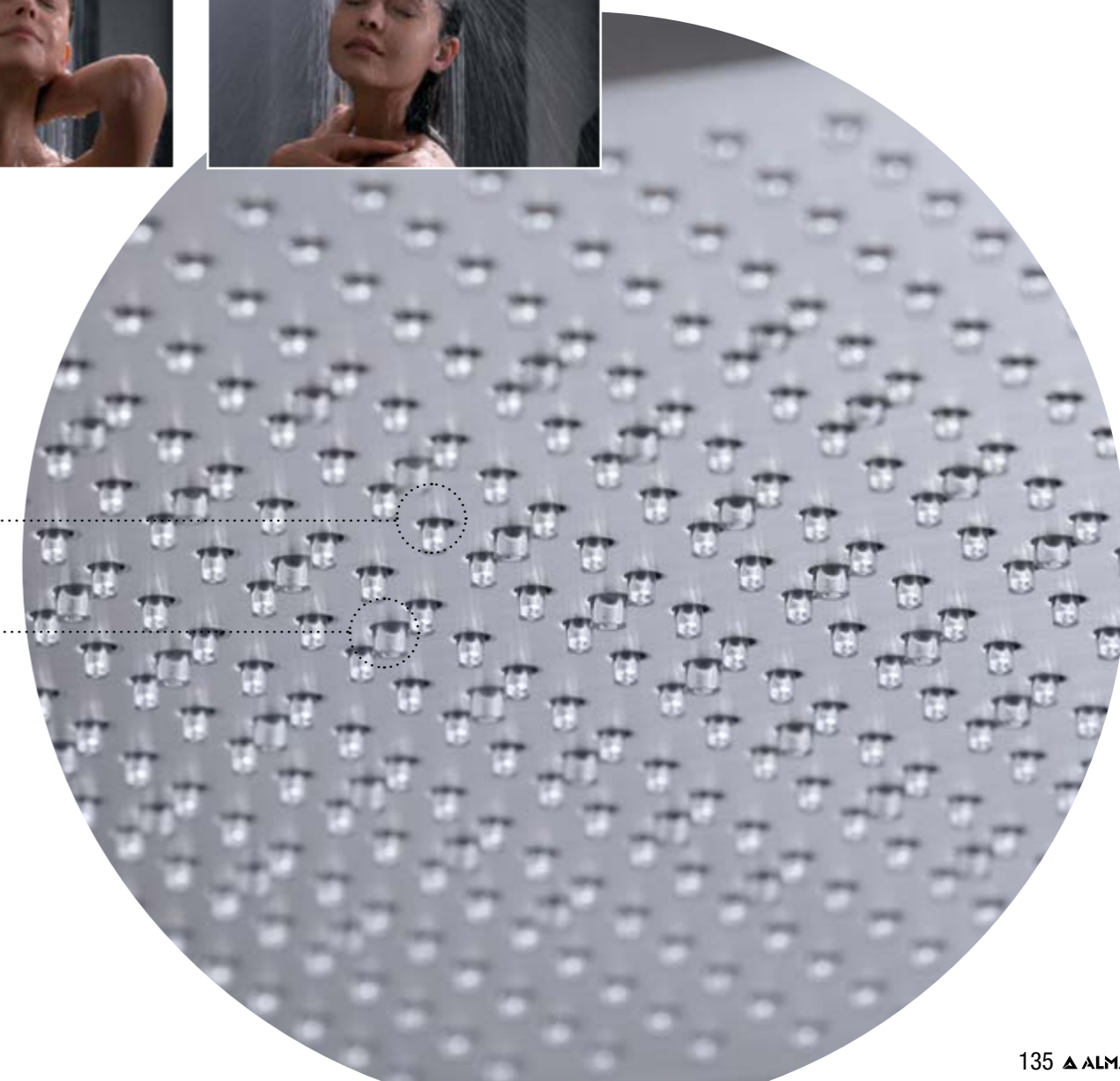


Intense Rain



• Velvet Rain

• Intense Rain



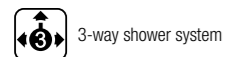
Sistema doccia incasso 3 vie

3-way built-in shower system

dettagli sistema doccia
shower system details



finiture | finishes
PVD Spazzolato Copper
PVD Brushed Copper



3-way shower system

water control



High Flow



Thermostat

water experience



Velvet Rain



XL Waterfall



Hand Shower

soffione | shower head

E044280 TEMPTATION VELVET DUAL FLOW 500

doccia | hand shower

E082108 POSH WITH BLACK HANDLE

presa acqua | water outlet

E095039 ROUND WATER OUTLET WITH SQUARE ROSETTE

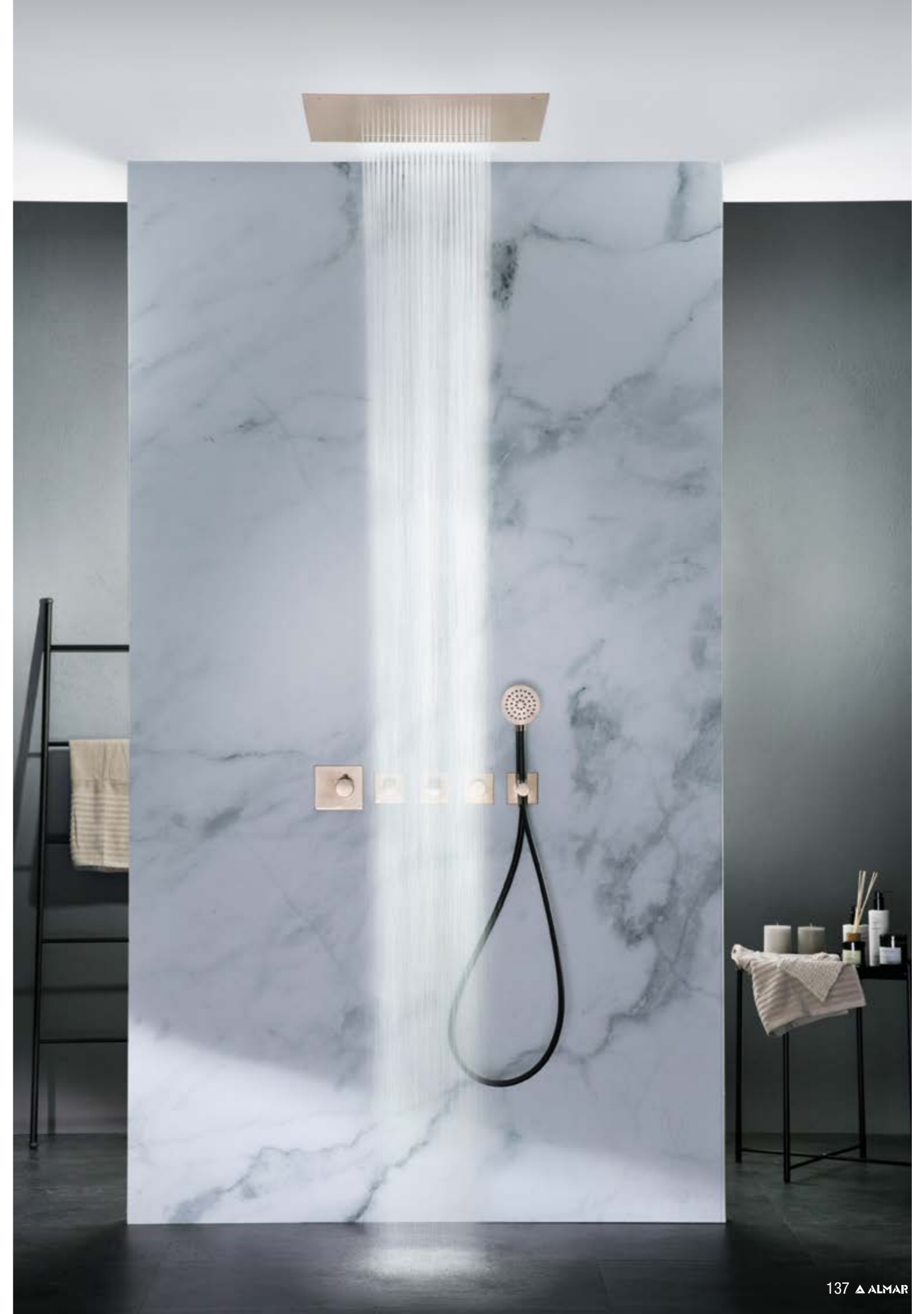
flessibile | flex hose

C084043 BLACK PVC FLEX - L 150 CM

miscelatore | water control

E176003 3-WAY HIGH FLOW CONCEALED MODULE

E180083 3-WAY HIGH FLOW ROUND ON SQUARE TRIM SET



PVD

INSPIRATIONS PVD

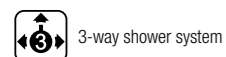


Sistema doccia incasso 3 vie

3-way built-in shower system

dettagli sistema doccia
shower system details

finiture | finishes
PVD Spazzolato Gun Metal
PVD Brushed Gun Metal



water control



water experience



soffione | shower head

E044283 TEMPTATION VELVET DUAL FLOW 500 WITH CHROMOTHERAPY

doccia | hand shower

E082108 POSH WITH BLACK HANDLE

saliscendi | slide bar

E087072 FLEXI WITH SQUARE ROSETTES

presa acqua | water outlet

E095036 ROUND WATER OUTLET WITH SQUARE ROSETTE

flessibile | flex hose

C084043 BLACK PVC FLEX - L 150 CM

accessori | accessories

E310001 BATHROBE HOLDER

miscelatore | water control

E134001 CORE UNIVERSAL BUILT-IN BOX

E176883 3-WAY CORE PUSH SQUARE TRIM SET

E150006
REMOTE CONTROL





Sistema doccia 1 via con vasca

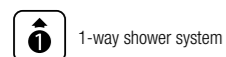
1-way shower system with bathtub

dettagli sistema doccia
shower system details

finiture | finishes

PVD Spazzolato High Brass
PVD Brushed High Brass

SISTEMA DOCCIA | SHOWER SYSTEM



1-way shower system

water control



Modular System



Single Lever Mixer

water experience



Hand Shower

SISTEMA VASCA | Bathtub system



2-way bathtub system

water control



Modular System



Thermostat

DOCCIA | SHOWER

saliscendi | slidebar

doccia | hand shower

presa acqua | water outlet

flessibile | flex hose

accessori | accessories

miscelatore | water control

VASCA | BATHTUB

miscelatore | water control

E087075 FLEXI SLIDE BAR WITH ROUND ROSETTES

E082108 POSH WITH BLACK HANDLE

E095040 WATER OUTLET WITH ROUND ROSETTE

C084043 BLACK PVC FLEX - L 150 CM

E310001 BATHROBE HOLDER

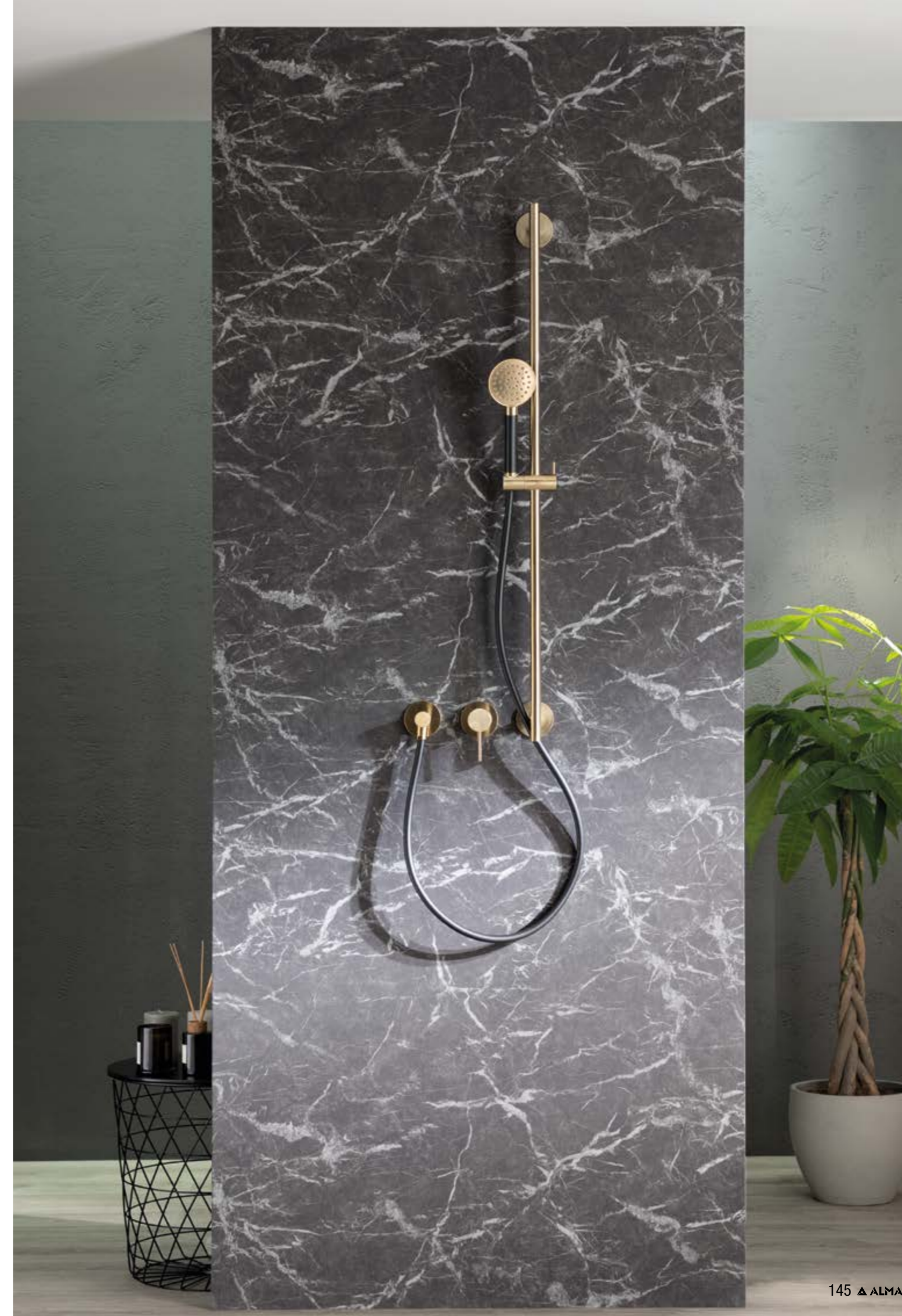
E305001 TOWEL HOLDER L 450 MM

E186900 1-WAY MODULAR SINGLE LEVER MIXER CONCEALED MODULE

E180140 1-WAY MODULAR SINGLE LEVER MIXER ROUND ROSETTE AND ROUND HANDLE TRIM SET

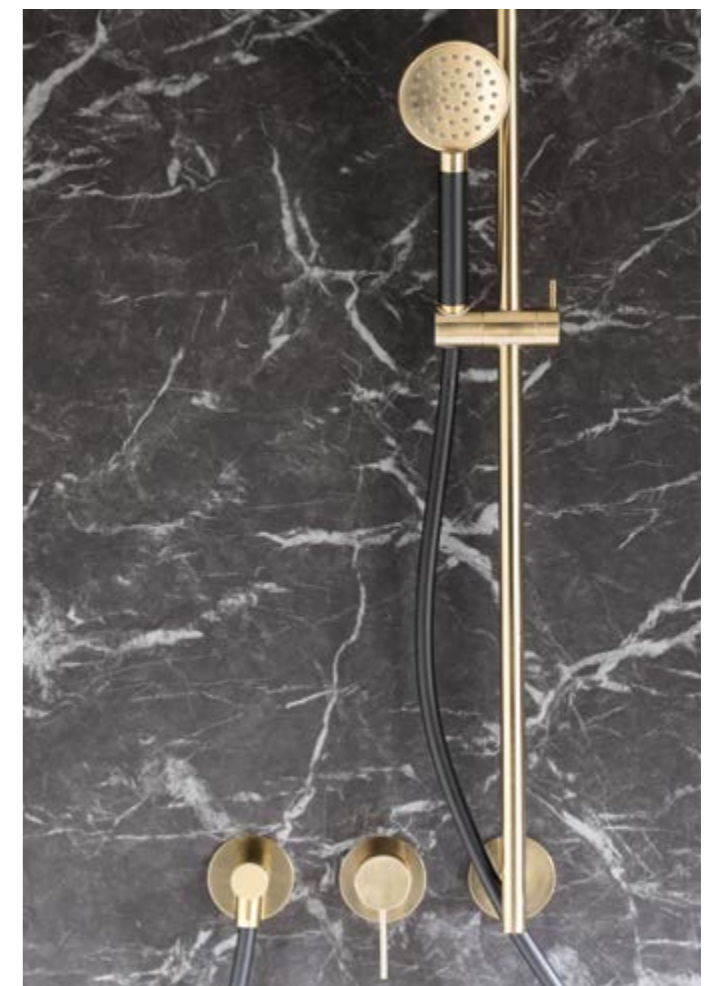
E169000 2-WAY MODULAR THERMOSTAT CONCEALED MODULE FOR BATHTUB

E180136 2-WAY MODULAR ROUND ROSETTES AND ROUND HANDLES TRIM SET FOR BATHTUB



PVD

INSPIRATIONS PVD



Sistema doccia incasso 3 vie

3-way built-in shower system

dettagli sistema doccia
shower system details



finiture | finishes

PVD Spazzolato High Brass
PVD Brushed High Brass



3-way shower system

water control



Core
Universal Box



Thermostat
Push

water experience



Rain



XL Waterfall



Hand Shower

soffione | shower head

E044024 TEMPTATION SQUARE 500 MONOJET

cascata | waterfall

E044274 XL BUILT-IN WATERFALL

doccia | hand shower

E082108 POSH WITH BLACK HANDLE

presa acqua | water outlet

E095039 ROUND WATER OUTLET WITH STAND SQUARE ROSETTE

flessibile | flex hose

C084043 BLACK PVC FLEX WITH HIGH BRASS CONES - L 150 CM

accessori | accessories

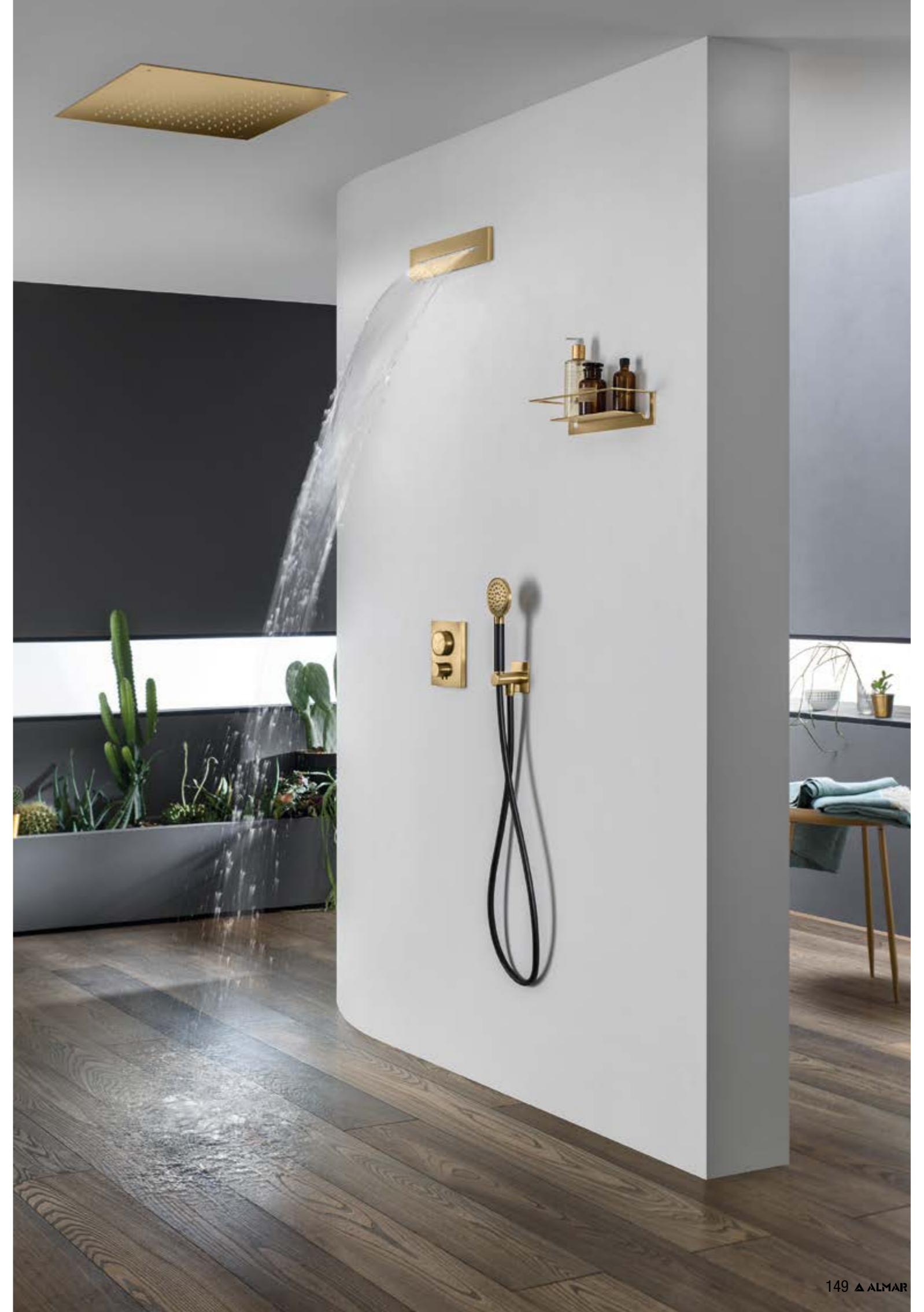
E300001 SOAP&BEAUTY HOLDER

E310001 BATHROBE HOLDER

miscelatore | water control

E134001 CORE UNIVERSAL BUILT-IN BOX

E176883 3-WAY PUSH THERMOSTAT SQUARE TRIM SET



PVD

INSPIRATIONS PVD



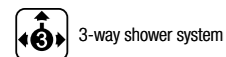
Sistema doccia incasso 3 vie

3-way built-in shower system

dettagli sistema doccia
shower system details

finiture | finishes

PVD Lucido Gold
PVD Polished Gold



3-way shower system

water control



Core
Universal Box



Thermostat

water experience



Rain



Bodyjet Mist



Hand Shower

soffione | shower head

E044024 TEMPTATION SQUARE 500 MONOJET

bodyjet | bodyjet

E044261 BODYJET MIST

doccia | hand shower

E082101 SENSE

presa acqua | water outlet

E095039 ROUND WATER OUTLET WITH STAND AND
SQUARE ROSETTE

flessibile | flex hose

C084052 BRASS FLEX L 150CM

accessori | accessories

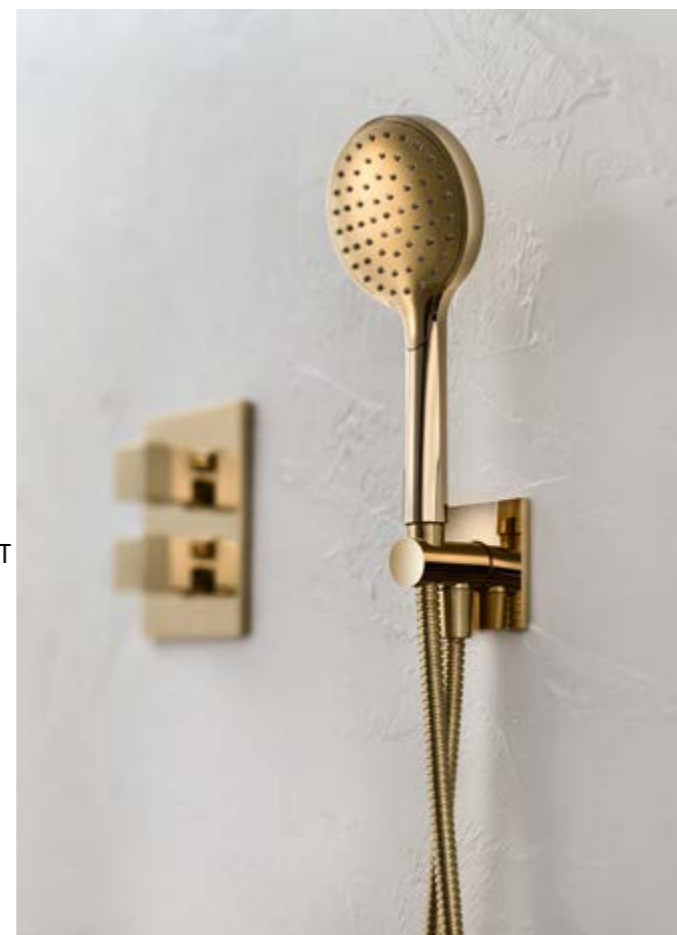
E300001 SOAP & BEAUTY HOLDER

E310001 BATHROBE HOLDER

miscelatore | water control

E134001 CORE UNIVERSAL BUILT-IN BOX

E176823 3-WAY CORE THERMOSTAT SQUARE TRIM SET





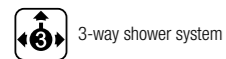
Sistema doccia incasso 3 vie

3-way built-in shower system

dettagli sistema doccia
shower system details

finiture | finishes

PVD Lucido Deep Black
PVD Polished Deep Black



3-way shower system

water control



High Flow



Thermostat

water experience



Rain



Cascade



Hand Shower

soffione | shower head

E044216 TEMPTATION CASCADE SQUARE 500 DUAL FLOW

doccia | hand shower

E082091 EASYBRASS HAND SHOWER

presa acqua | water outlet

E095039 ROUND WATER OUTLET WITH STAND AND SQUARE ROSETTE

flessibile | flex hose

C084052 BRASS FLEX L 150CM

accessori | accessories

E305001 TOWEL HOLDER L 45 CM

miscelatore | water control

E176003 3-WAY HIGH FLOW CONCEALED MODULE

E180083 3-WAY HIGH FLOW ROUND ON SQUARE TRIM SET



FINITURE

FINISHES

VERNICIATO I MATT COLOURS



Matt Black



Matt White*

VERNICIATO NERO E VERNICIATO BIANCO

Realizzati con verniciatura a polvere o a liquido, i nostro Matt Colours sono **caratterizzati da robustezza e lunga durata.**

MATT BLACK AND MATT WHITE

Made from powder or liquid coating. Our Matt Colours are characterized by **resistance and long-life quality.**

* Verniciato bianco disponibile su una selezione di prodotti / *matt white available on a selection of products.*



Sistema doccia incasso 3 vie

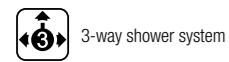
3-way built-in shower system

dettagli sistema doccia
shower system details

finiture | finishes

Verniciato Nero
Matt Black

SISTEMA DOCCIA | SHOWER SYSTEM



3-way shower system

water control



Modular
System



Thermostat

water experience



Velvet Rain



Intense Rain



Hand Shower

soffione | shower head
accessori | accessories

E044282 TEMPTATION VELVET 380 DUAL FLOW

E300001 SOAP&BEAUTY HOLDER

E310001 BATHROBE HOLDER

miscelatore | water control

E176904 3-WAY MODULAR THERMOSTAT
CONCEALED MODULE

E180183 3-WAY MODULAR THERMOSTAT SQUARE
ROSETTES AND ROUND HANDLES TRIM SET



MATT

INSPIRATIONS
MATT BLACK



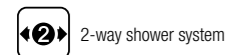
Sistema doccia parete 2 vie

2-way built-in shower system

dettagli sistema doccia
shower system details

finiture | finishes

Verniciato Nero
Matt Black



2-way shower system

water control



High Flow



water experience



Rain



Hand Shower

soffione | shower head

E044044 ROUND EMOTION 300

braccio | wall arm

E021113 ROUND ARM WITH ROUND ROSETTE L 350 MM

doccia | hand shower

E082101 SENSE

presa acqua | water outlet

E095037 ROUND WATER OUTLET WITH STAND AND ROUND ROSETTE

flessibile | flex hose

C084043 BLACK PVC FLEX - L 150 CM

accessori | accessories

E300001 SOAP & BEAUTY HOLDER

miscelatore | water control

E176502 2-WAY HIGH FLOW WITH DIVERTER CONCEALED MODULE

E180031 2-WAY HIGH FLOW ROUND TRIM SET



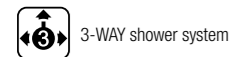
Sistema doccia soffitto 3 vie

3-way wall arm shower system

dettagli sistema doccia
shower system details

finiture | finishes

Verniciato Nero
Matt Black



3-WAY shower system

water control



Core
Universal Box



Single Lever Mixer

water experience



Rain



Waterfall



Hand Shower

soffione | shower head

E044039 EMOTION SQUARE 300

braccio | wall arm

E021108 ROUND ARM WITH SQUARE ROSETTE

cascata | waterfall

E044086 EXTERNAL WATERFALL

doccia | hand shower

E082027 EMOTION 100 MONOJET

presa acqua | water outlet

E095010 WATER OUTLET WITH STAND AND SQUARE ROSETTE

flessibile | flex hose

C084043 BLACK PVC FLEX - L 150 CM

miscelatore | water control

E134001 CORE UNIVERSAL BUILT-IN BOX

E186543 3-WAY CORE SINGLE LEVER MIXER THIN TRIM SET



FINITURE

FINISHES

LUCIDI E SPAZZOLATI | POLISHED AND BRUSHED



Lucido
Polished



Spazzolato
Brushed

LUCIDI

Cromo e Acciaio lucidi danno vita a finiture intramontabili. Una scelta dal sapore classico ma sempre attuale, in grado di inserirsi al meglio in ogni ambiente.

SPAZZOLATI

Nickel e Acciaio spazzolati donano equilibrio e armonia ai sistemi bagno contemporanei, sposandosi alla perfezione a materiali, colori e finiture di mobili e pareti.

GLOSSY

Chrome and polished steel create timeless finishes. A classic yet up-to-date choice, suitable for any environment.

BRUSHED

Brushed Nickel and Steel give balance and harmony to contemporary bathroom systems, blending perfectly with furniture and walls' materials, colours and finishes.



Sistema doccia incasso 2 vie

2-way built-in shower system

dettagli sistema doccia
shower system details



finiture | finishes

Acciaio Supermirror | Cromo
Supermirror Stainless Steel | Chrome



2-way system

water control



High Flow



Thermostat

water experience



Velvet Rain



Hand Shower

soffione | shower head

E044279 TEMPTATION VELVET MONOJET 380

doccia | hand shower

E082091 EASY BRASS

presa acqua | water outlet

E095039 ROUND WATER OUTLET WITH STAND AND SQUARE ROSETTE

flessibile | flex hose

C084021 316 STAINLESS STEEL PVC FLEX - L 150 CM

accessori | accessories

E310001 BATHROBE HOLDER

miscelatore | water control

E176002 2-WAY HIGH FLOW CONCEALED MODULE

E180082 2-WAY HIGH FLOW ROUND ON SQUARE TRIM SET





Sistema doccia 2 vie

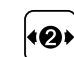
2-way wall arm shower system

dettagli sistema doccia
shower system details

finiture | finishes

Cromo
Chrome

SISTEMA DOCCIA | SHOWER SYSTEM

 2-way shower system

water control

 Modular System  Thermostat

water experience

   Multijet

 Hand Shower

soffione | shower head

E044286 BEAM MULTI-JET

accessori | accessories

E310001 BATHROBE HOLDER

E300001 SOAP&BEAUTY HOLDER

miscelatore | water control

E176903 2-WAY MODULAR THERMOSTAT CONCEALED MODULE WITH HAND SHOWER

E180133 2-WAY MODULAR THERMOSTAT WITH ROUND HANDLES AND ROUND ROSETTES WITH HAND SHOWER TRIM SET

BEAM MULTIGETTO BEAM MULT-JET

INCLINAZIONE REGOLABILE

L'inclinazione del soffione può essere regolata manualmente dall'utilizzatore per assicurare il massimo del comfort nell'utilizzo.

ADJUSTABLE INCLINATION

The shower head inclination can be adjusted manually, to ensure the maximum comfort while using it.





BEAM MULTIGETTO

MULTIJET BEAM

Tre getti in un solo soffione | *Three jets in one shower head*

Il soffione **Beam** unisce estetica pulita e rigorosa a un'estroverosa funzionalità, e si lascia scoprire nelle versioni monogetto e multigetto.

Adatto anche a spazi contenuti, **Beam** va oltre il suo ruolo di soffione e diventa un elemento di arredo capace di stupire, indicato per soluzioni a parete e a soffitto.

Nella versione multigetto ruotando la ghiera in finitura è possibile scegliere fra tre diversi tipi di getto, con possibilità di getti combinati.

*The **Beam** shower head joins a clean and strict look with an innovative functionality and is available in two versions: single and multiple jet.*

*Suitable also for small spaces, **Beam** goes beyond its role of shower head and becomes a **fitting able to surprise**, suitable to be mounted on the wall or in the ceiling. Rotating the ferrule, you can choose among **three different types of jet**, with the possibility of combining them.*



MASSAGE

Un **getto vigoroso** ad azione massaggiante intermittente, che conquista con la sua azione energizzante.

*A **strong jet** with an intermittent massaging action, conquering with its energizing action.*

AIRSTREAM

Una delicata combinazione di aria ed acqua, per una **sensazione piena e avvolgente**.

*A soft mix of air and water, for a **full and enveloping feeling**.*

RAIN

Una **morbida pioggia** che accarezza il corpo e trasforma la doccia in un momento di vero piacere.

*A **soft rain** caressing the body and converting the shower into a moment of real pleasure.*



Sistema doccia incasso 5 vie

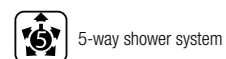
5-way built-in shower system

dettagli sistema doccia
shower system details



finiture | finishes

Acciaio Supermirror | Cromo
Supermirror Stainless Steel | Chrome



5-way shower system

water control



High Flow



Thermostat



Chromotherapy

water experience



Rain



Icicle



Wire*



Spin Bodyjet



Hand Shower

soffione | shower head

E044302 TEMOTION ICICLE SQUARE 3 FLOWS WITH CHROMOTHERAPY

bodyjet | bodyjet

E044177 SPIN SQUARE BODY JET

doccia | hand shower

E082094 THIN BRASS

presa acqua | water outlet

E095031 ROUND WATER OUTLET WITH STAND AND SQUARE ROSETTE

flessibile | flex hose

C084023 SILVER FLEX CHROME - L 150 CM

accessori | accessories

E310001 BATHROBE HOLDER

E300001 SOAP & BEAURY HOLDER

miscelatore | water control

E176005 5-WAY HIGH FLOW THERMOSTAT CONCEALED MODULE

E180025 5-WAY HIGH FLOW SQUARE TRIM SET

La Cascata Wire è regolabile manualmente in 3 posizioni
Wire Waterfall is manually adjustable in 3 positions

E150006
REMOTE CONTROL





Sistema doccia incasso 3 vie

3-way built-in shower system

dettagli sistema doccia
shower system details



finiture | finishes

Acciaio Supermirror | Cromo
Supermirror Stainless Steel | Chrome



3-way shower system

water control



Core
Universal Box



Single
Lever Mixer

water experience



Rain



Icicle



Hand Shower

soffione | shower head

E044258 TEMPTATION ICICLE SQUARE DUAL FLOW

doccia | hand shower

E082101 SENSE

presa acqua | water outlet

E095010 WATER OUTLET WITH STAND AND SQUARE
ROSETTE

flessibile | flex hose

C084023 SILVER FLEX CHROME - L 150 CM

accessori | accessories

E134001 CORE UNIVERSAL BUILT-IN BOX

miscelatore | water control

E186543 3-WAY CORE SINGLE LEVER MIXER THIN TRIM SET



Sistema doccia incasso 3 vie

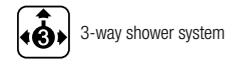
3-way built-in shower system

dettagli sistema doccia
shower system details



finiture | finishes

Acciaio Supermirror | Cromo
Supermirror Stainless Steel | Chrome



3-way shower system

water experience



Rain



Wave Cascade



Wave Bodyjet



Hand Shower

soffione | shower head

E044046 TEMPTATION SQUARE 380 MONOJET

bodyjet | bodyjet

E044246 WAVE BODYJET BUILT-IN

doccia | hand shower

E082070 THIN

presa acqua | water outlet

E095010 SQUARE WATER OUTLET WITH STAND WITH SQUARE ROSETTE

flessibile | flex hose

C084021 SILVER FLEX - L 150 CM



Sistema doccia incasso 5 vie

5-way built-in shower system

dettagli sistema doccia
shower system details



finiture | finishes

Acciaio Supermirror | Cromo
Supermirror Stainless Steel | Chrome



5-way shower system

water experience



Rain



Spin



Cascade



Bodyjet Spin



Hand Shower



Chromotherapy



E150006
REMOTE CONTROL

soffione | shower head

E044190 TEMPTATION SPIN RECTANGULAR 630X480 3 FLOWS WITH CHROMOTHERAPY

bodyjet | bodyjet

E044177 SPIN BODYJET

doccia | hand shower

E082070 THIN

presa acqua | water outlet

E095010 SQUARE WATER OUTLET WITH STAND AND SQUARE ROSETTE

flessibile | flex hose

C084021 SILVER FLEX - L 150 CM

miscelatore | water control

E176005 5-WAY HIGH FLOW CONCEALED MODULE

E180085 5-WAY HIGH FLOW ROUND ON SQUARE TRIM SET



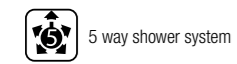
Sistema doccia incasso 4 vie

4 way built-in shower system

dettagli sistema doccia
shower system details

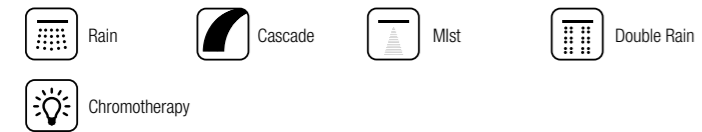


finiture | finishes
Acciaio Supermirror
Supermirror Stainless Steel



5 way shower system

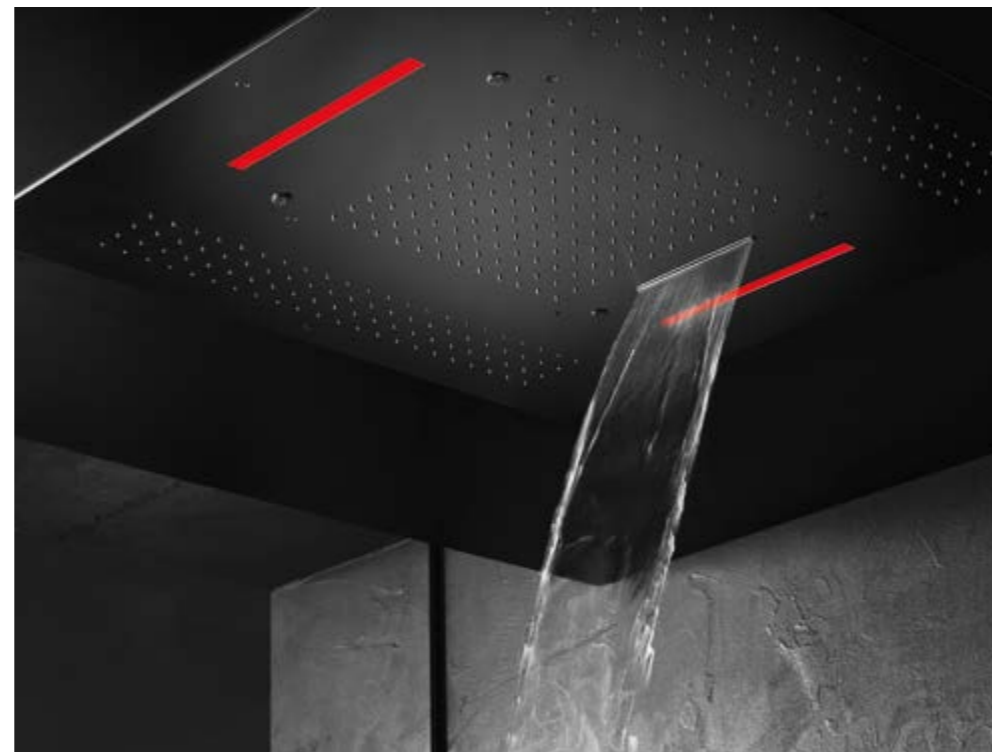
water experience



soffione | shower head

E044173 TEMPTATION SQUARE 950 4 FLOWS WITH
CHROMOTHERAPY

E150006
REMOTE CONTROL



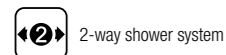
Sistema doccia parete 2 vie

2-way wall mounted shower system

dettagli sistema doccia
shower system details

finiture | finishes

Cromo
Chrome



2-way shower system

water control



Core
Universal Box



Thermostat Push

water experience



XL Waterfall



Hand Shower

soffione | shower head

E044273 XL WATERFALL

doccia | hand shower

E082101 SENSE

presa acqua | water outlet

E095039 ROUND WATER OUTLET WITH STAND AND
SQUARE ROSETTE

flessibile | flex hose

C084023 SILVER FLEX CHROME - L 150 CM

accessori | accessories

E300002 SOAP&BEAUTY CORNER HOLDER

miscelatore | water control

E310001 BATHROBE HOLDER

E134001 CORE UNIVERSAL BUILT-IN BOX

E176882 2-WAY CORE PUSH THERMOSTAT SQUARE TRIM
SET



Sistema doccia parete 4 vie

4-way wall mounted shower system

dettagli sistema doccia
shower system details



finiture | finishes

Acciaio Supermirror | Cromo
Supermirror Stainless Steel | Chrome



4-way shower system

water experience



Rain



Cascade



Bodyjet Spin



Hand Shower

soffione | shower head

E044193 SLIM SQUARE DUAL FLOW

bodyjet | bodyjet

E044177 SPIN BODYJET SQUARE

doccia | hand shower

E082070 THIN

presa acqua | water outlet

E095010 SQUARE WATER OUTLET WITH STAND AND SQUARE ROSETTE

flessibile | flex hose

C084021 SILVER FLEX - L 150 CM

miscelatore | water control

E180022 4-WAY HIGH FLOW TRIM SET WITH SQUARE ROSETTES

E176504 4-WAY HIGH FLOW CONCEALED MODULE



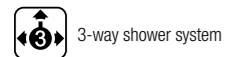
Sistema doccia parete 3 vie

3-way wall mounted shower system

dettagli sistema doccia
shower system details

finiture | finishes

Cromo
Chrome



3-way shower system

water control



Core
Universal Box



Thermostat

water experience



Rain



Mist Bodyjet



Hand Shower

soffione | shower head

E044039 SQUARE EMOTION L300

braccio | wall arm

E021112 ROUND ARM WITH SQUARE ROSETTE L350

bodyjet | bodyjet

E044261 BODYJET MIST

doccia | hand shower

E082094 THIN

presa acqua | water outlet

E095039 ROUND WATER OUTLET WITH STAND AND SQUARE ROSETTE

flessibile | flex hose

C084023 SILVER FLEX CHROME - L 150 CM

accessori | accessories

E305001 TOWEL HOLDER L450

E300002 SOAP&BEAUTY CORNER HOLDER

miscelatore | water control

E134001 CORE UNIVERSAL BUILT-IN BOX

E176823 2-WAY CORE THERMOSTAT SQUARE TRIM SET




Sistema doccia colonna column shower system

con termostatico esterno
with external thermostat

dettagli sistema doccia
shower system details



 2 way shower system (deviatore nel termostatico |
diverter in the thermostat

colonna | column **E405002** COMPLETE SHOWER COLUMN
WITH EXTERNAL THERMOSTAT

doccia | hand shower **E082114** VELVET 100

flessibile | flex hose **C084021** SILVER FLEX

soffione | shower head **E044292** VELVET ROUND 230 BRASS

Il codice E405002 include soffione, doccia e flessibile.
Disponibile anche versione senza soffione, doccia e
flessibile: codice E404001.
*Code E405002 includes head shower, hand shower and
flex hose.*
*Also available version without head shower hand shower
and flex hose: code E404001.*




Sistema doccia colonna column shower system

con termostatico esterno
with external thermostat

dettagli sistema doccia
shower system details



 2 way shower system (deviatore nel termostatico |
diverter in the thermostat

colonna | column **E404001** SHOWER COLUMN SET WITH
EXTERNAL THERMOSTAT

doccia | hand shower **E082126** VELVET HAND SHOWER

flessibile | flex hose **C084021** SILVER FLEX

soffione | shower head **E044293** VELVET 230 HEAD SHOWER

*Il codice E404001 comprende la sola colonna con
termostatico esterno: soffione, doccia e flessibile sono da
acquistare a parte.*

*Code E404001 includes only the shower column with
external thermostat: head shower, hand shower and flex
hose are to be purchased separately.*




Sistema doccia colonna column shower system

con presa acqua integrata
with water inlet

dettagli sistema doccia
shower system details



 2 way shower system (deviatore nel termostatico |
diverter in the thermostat

colonna | column **E170004** FLUID SHOWER COLUMN SET WITH
LOWER WATER INLET

doccia | hand shower **E082019** SKINNY

flessibile | flex hose **C084021** SILVER FLEX

soffione | shower head **E044075** EMOTION ROUND 250

* possibilità di ingresso acqua superiore (E170002) o inferiore
(E170004)

* possibility of upper (E170002) or lower (E170004) water
inlet




Sistema doccia colonna column shower system

con presa acqua esterna
with external water inlet

dettagli sistema doccia
shower system details



 2 way shower system (deviatore nel termostatico |
diverter in the thermostat

colonna | column **E170006** FLUID SHOWER COLUMN SET WITH
EXTERNAL WATER INLET

doccia | hand shower **E082019** SKINNY

flessibile | flex hose **C084021** SILVER FLEX

soffione | shower head **E044075** EMOTION ROUND 250
disponibile termostatico E400000

miscelatore | water control available thermostat E400000

* il prodotto necessita di 1 sola uscita, il meccanismo di deviazione getti è
interno; la colonna è fornita di soffione e doccia indicati

* The product needs only 1 way, the diverter mechanism is inside the
product; the column is equipped with head shower and hand shower



Almar S.r.l.

Via dello Sport, 17 bis
21026 Gavirate (VA) Italy
Tel +39 0332 743961
Fax +39 0332 743886
www.almarmadeinitaly.it

Almar si riserva il diritto di apportare modifiche a prodotti e componenti, qualora lo ritenga necessario, senza preavviso e in qualunque momento.

Almar reserves the right to modify products and components, whenever necessary, without notice at any time.

Almar se réserve le droit de modifier ses produits et ses accessoires, si nécessaire, à tout moment sans préavis.

Almar behält sich das Recht vor, jederzeit ohne vorherige Ankündigung, die Produkten und Zubehörteile ändern, wenn es notwendig ist.

Almar se reserva el derecho a modificar los productos y accesorios, cuando es necesario, en cualquier momento sin previo aviso.

Questo catalogo è tutelato dalla legge sui diritti d'autore (legge 22/4/1941 n°633) e dalla legge 14/12/1942 n.1485. E' vietata ogni riproduzione anche parziale dello stesso.

This catalogue is copyrighted and protected by the Italian law (22/4/1941 n°633 and 14/12/1942 n°1485). It is strictly forbidden to copy any part of it.

Ce catalogue est défendu de la loi sur les droites d'auteur (loi 22/4/1941 n° 633) et de la loi 14/12/1942 n° 1485. Il est interdit chaque reproduction, même partielle.

Dieses Katalog ist vom Urheberrechtsgesetz (Gesetz 22/4/1941 n. 633) und vom Gesetz 14/12/1942 n. 1485 geschützt. Jeder Nachdruck auch teilweise ist verboten.

Este catalogo esta protegido por la Ley de los Derechos de Autor (Ley 22/4/1941 n°633) y de la Ley 14/12/1942 n° 1485. Esta prohibida la reproducción, incluso parcial, del mismo.

Concept: Almar

Photograph: InVarianti - Real Time

Print: Formaprinting